

Board of County Commissioners

Jefferson County, Florida

Stephen G. Fulford
District 1, Chair

John Nelson, Sr.
District 2

Hines F. Boyd
District 3

Betsy Barfield
District 4

Danny Monroe, III
District 5

Regular Session Agenda

March 3, 2011 at the Courthouse Annex
435 W. Walnut St. Monticello, FL 32344

1. **9:00 A.M. – Call to Order, Invocation, Pledge of Allegiance**
2. **Public Announcements, Presentations, & Awards**
3. **Consent Agenda**
 - a) **Approval of Agenda**
 - b) **Minutes of February 17, 2011 Regular Session**
4. **Citizens Request & Input on Non-Agenda Items**
(3 Minute Limit, No Commissioner Discussion.)
5. **General Business**
 - a) **Jefferson County Rec. Park Advisory Board** – John McHugh
 - b) **Vision Plan Review Update** – Julie Conley/Phil Calandra
 - c) **Landfill Resolution** – Frank Darabi
 - d) **Investment Policy Discussion** – Commissioner Barfield
 - e) **Internet Café Discussion** – Commissioner Barfield
 - f) **Rules of Procedure/Distribution of Workshop Materials** – Commissioner Barfield
 - g) **Real Property Donation** – Attorney Buck Bird
 - h) **Draft Ordinance-Low Income Senior Citizen Homestead Exemp.** – Angela Gray
 - i) **Jefferson County Rock Mine Analysis** – Preble-Rish, Inc.
6. **County Coordinator's Report**
 - a) **Road Department Budget Update**
7. **Citizen's Forum**
(3 Minute Limit, Discussion Allowed.)
8. **Commissioner Discussion Items**
9. **Adjourn**

From the manual "Government in the Sunshine", page 40:

Paragraph C. Each board, commission or agency of this state or of any political subdivision thereof shall include in the notice of any meeting or hearing, if notice of meeting or hearing is required, of such board, commission, or agency, conspicuously on such notice, the advice that if a person decides to appeal any decision made by the board, agency or commission with respect to any matter considered at such meeting or hearing, he will need a record of the proceedings, and for such purpose he may need to ensure that a verbatim record of the proceedings is made, which record includes the testimony and evidence upon which the appeal is to be based.

JEFFERSON COUNTY BOARD OF COUNTY COMMISSIONERS
REGULAR SESSION
February 17, 2011

The Board met this date in regular session. Present were Chairman Stephen Fulford, Commissioners Betsy Barfield, Hines Boyd, Danny Monroe and John Nelson. Also present were County Coordinator Roy Schleicher and Clerk of Court Kirk Reams.

1. Chairman Fulford announced that the Jefferson County Schools Transition Team Presentation would be moved to General Business, Item L.
2. On motion by Commissioner Monroe, seconded by Commissioner Boyd and unanimously carried, the Consent Agenda, consisting of the approval of the agenda, the minutes of the February 3, 2011 Regular Session and the minutes of the February 7, 2011 Fire/EMS Station Workshop was approved.
3. Extension Director John Lilly introduced a Memorandum of Understanding with the Florida Cooperative Extension Service. He explained that this memorialized the function of his department since its inception. On motion by Commissioner Monroe, seconded by Commissioner Boyd and unanimously carried, the memorandum was approved.
4. John Dailey, representing a group interested in working for the county to analyze any effects from the BP Oil Spill, addressed the Board with the group's proposal. He explained that his group would be compensated on a contingency basis. Commissioner Barfield expressed concern with interest charged on expenses, to which Lisa Foran, representing the legal side of the group, stated that costs were shared among all clients. Chairman Fulford asked how many firms were performing this function, to which Mr. Dailey replied none locally. Commissioner Boyd stated his belief that BP had been a good steward by sending a representative to the area for months to talk with people about filing claims if they were damaged by the oil spill. Mr. Boyd further stated he felt it would be difficult to distinguish any cause and effect for Jefferson County. Chairman Fulford agreed, saying that he felt damage would be difficult to prove statistically and that BP has tried to help small businesses and individuals. Attorney Bird stated he had no problem with the legal elements of the contract, but that if the county were to pull out of the contract it would be responsible for its pro-rata share of fees. Commissioner Nelson stated he felt it was a "win-win" situation, to which Commissioner Barfield agreed. Commissioner Monroe stated that if the county had suffered any damages, then it was entitled to compensation. On motion by Commissioner Barfield, seconded by Commissioner Nelson and carried 3 to 2 (Boyd and Fulford opposed), the Board approved the BP Oil Taxing Authority Contract.
5. Attorney Drew Parker introduced the ownership issue regarding the Monticello Maintenance Yard on Martin Road. He presented a map showing land on the site that the county owned as well as land owned by the state of Florida that the county leases. The map also showed the parcel to the north that the state owned, which was the former site of the county jail. Mr. Parker explained that the first step he recommended was to meet with DEP to resolve the restrictive covenant that should have been filed with respect to the area of institutional control on the site. He further explained that the next step would be a request of ownership of the whole parcel from the state. Commissioner Nelson expressed concern about any contamination issues, to which Attorney Scott Shirley responded he would follow up with DEP to ensure no liability existed for the county. Commissioner Barfield inquired as to whether taking ownership of leased land would increase the county's liability, to which Attorney Shirley responded he would try to determine. On motion by Commissioner Barfield, seconded by Commissioner Nelson and unanimously carried, the Board authorized Attorneys Shirley and Parker to engage in conversations with DEP in regards to institutional control and to discuss the potential of obtaining ownership of the entire parcel.

6. Attorney Shirley addressed the Board concerning an Industrial Park stormwater issue. He spoke of the need to meet with surrounding property owners to get their consent to allow easement access for the stormwater pipe system in exchange for the county allowing access by extending Industrial Park Road and maintaining a section of Drifton Woods Road. Commissioner Monroe spoke of possible safety concerns by allowing residential traffic access through the Industrial Park. Chairman Fulford concurred, but stated that this arrangement may be the only solution. On motion by Commissioner Boyd, seconded by Commissioner Barfield and unanimously carried, the Board authorized Attorney Shirley to proceed with negotiations with the neighbors for the benefit of all parties.
7. Attorney Shirley presented the proposed Community Development Resolution. He explained that this resolution adopts the Comprehensive Plan as the county's Community Development Plan. On motion by Commissioner Boyd, seconded by Commissioner Monroe and unanimously carried, Resolution No. 11-021711-01, Community Development Resolution, was approved.
8. Commissioner Barfield asked Paul Dawson with Public Risk Insurance Agency (Brown & Brown) to give an overview of insurance versus bonds. Mr. Dawson explained that Public Official Liability protected actions of officials, but did not cover intentional or fraudulent acts as a bond would. Clerk of Court Kirk Reams asked Mr. Dawson is there was an insurance policy that would cover intentional or fraudulent acts, to which Mr. Dawson explained that the trend he was seeing in many counties was the purchase of a crime/employee dishonesty policy. Mr. Dawson further explained that the process for this policy was less invasive and provided more comprehensive coverage. Commissioner Barfield expressed her desire to be covered from liability. Clerk of Court Kirk Reams stated he would work with Mr. Dawson and bring back some quotes for different levels of coverage.
9. County Coordinator Roy Schleicher presented the Board with photos of the dump truck purchased at the Yoder and Frey auction. Commissioner Boyd presented pictures of a dump trailer and grapple truck available at a different auction that he recommended for the Road Department and Solid Waste Department respectively. Solid Waste Director Beth Thorne responded that she needed a roll-off truck more than a grapple truck. Commissioner Nelson stated his desire to see a tracking program in place for the replacement of vehicles. Commissioner Barfield stated that this issue sounded like something that a Coordinator or Administrator should be handling, not a Commissioner. County Coordinator Roy Schleicher stated that the mechanic could not go to the auction this weekend and it was not a good idea to go to the auction without someone knowledgeable to inspect the vehicles. Commissioner Monroe stated that it was up to the department heads to bring their needs before the Board. Commissioner Boyd stated he felt it was the duty of a Commissioner to identify problems and propose solutions beneficial to county citizens.
10. Chairman Fulford expressed his desire to take the development and implementation of Broadband Plan presented by The Information Institute off the table due to it being more than what the county needed or originally intended.
11. Commissioner Boyd stated his belief that the county was missing an opportunity by not utilizing modular construction for the Fire Rescue Station due to misconceptions about this type of construction. Commissioner Nelson stated that this discussion was more appropriate at a workshop. County Coordinator Roy Schleicher agreed to set a workshop for a later date after other stations have been visited and proposals reviewed.
12. Property Appraiser Angela Gray presented a Powerpoint presentation on the Low Income Senior Citizen Homestead Exemption. She explained that at least one person in the household had to be 65 years of age or older and the property must have been homesteaded as of January 1st. Additionally, household income could not exceed \$26,203 annually. Mrs. Gray gave a breakdown of projected revenue

losses of \$8323, \$24,968 and \$41,613 for exemption levels of \$5000, \$15,000, and \$25,000 respectively. On motion by Commissioner Nelson, seconded by Commissioner Monroe and unanimously carried, the Board approved moving forward with a draft ordinance to consider for public hearing.

13. County Coordinator Roy Schleicher presented a pro/con list for the private dirt road repair program previously discussed. He stated the Board should decide to either create a program and work out the details or decide not to pursue the program. Commissioner Barfield stated that she was in favor of some type of limited program where the county would be required to be presently working in the area where the private road was located. She also stated she would like to see time limited to three to five hours and on Friday and Saturday only. Mrs. Barfield did not want to see the county get into hauling material as part of the program and would require the county be paid up front with a signed no guarantee contract. Commissioner Monroe stated he opinion the county did not need to enter into this kind of program and that it would "open up a can of worms." Commissioner Nelson stated he had talked to many surrounding counties and stated that few had these programs and if they did, the program was very limited. Commissioner Boyd stated this was a long time problem that needed a solution for these taxpayers. Chairman Fulford stated a concern with the county keeping up with the work it currently had and expressed that there was work that even the county had to bid out to private contractors to perform because it could not. He also stated his concern with taking business away from the private sector. Chairman Fulford gave a proposal that would have the county help homeowners associations with an RFQ for scope of work and set up a liaison with private contractors on behalf of these associations. Commissioner Nelson asked Brent Wood with Valley View HOA if private contractors had been consulted to which Mr. Wood responded that private contractors were too cost prohibitive. Citizen Chuck Sarkisian says that the county does have resources that are available on Friday and Saturday to do the work. Traci Wood with Valley View HOA asked the Board to adopt a program that would not cost the taxpayers anything and that the only decision was whether to help residents or not. Citizen Stephen Monroe stated that the county could not afford to get into the private road business and that the county should not turn its back on private contractors. Chairman Fulford spoke of looking at the possibility of a two-thirds program, where if two-thirds of the people agree to have the road paved, then an assessment could be levied on their property over time to pay for the paving. On motion by Commissioner Boyd, seconded by Commissioner Barfield and failed 2 to 3 (Fulford, Monroe and Nelson opposed), the Board did not approve to establish a program and did not task County Coordinator Schleicher to work out the details. Citizen Paul Michael suggested having a workshop on the issue. On motion by Commissioner Barfield, seconded by Commissioner Boyd and carried 4 to 1 (Monroe opposed), the Board agreed to create a program to assist private citizens by either having the county assist in administering with private contractors and/or having the Road Department solely responsible for the program and with the ability to consider other options to implement. County Coordinator Roy Schleicher agreed to set up a future workshop on this matter.
14. On motion by Commissioner Boyd, seconded by Commissioner Barfield and unanimously carried, the meeting was extended.
15. County Coordinator Roy Schleicher presented department head reports to the Board and notified the Board that he would be meeting with Road Superintendent David Harvey and Clerk of Court staff to discuss budget issues. Mr. Schleicher presented an updated calendar, to which Commissioner Barfield requested the county website calendar be updated as well. Mr. Schleicher reported that the county scored a 130/135 on its HUD Rental Program / Section 8 housing. He also stated he would be working with department heads on strategic planning issues and that he would be bringing an updated committee list at a future meeting.
16. Citizen Paul Henry stated that local governments should follow the Governor's example of sending federal monies back to help with the national deficit.

17. Citizen C.P. Miller gave credit to the Jefferson County Fire Rescue for their quick response to a house fire. He stated that the county roads needed attention and that the county got out of the driveway/culvert business because of the interference with private contractors.
18. Commissioner Barfield stated her desire to partner with Leon County for a grant opportunity through CRTPA for a bike lane/shoulder on US-90. Commissioner Barfield asked if the workshop scheduled with Harry Reid with CRTPA could be changed from March 28th to another date. County Coordinator Roy Schleicher stated he would reschedule the meeting. Commissioner Barfield also expressed a desire to look at the investment policies of other counties.
19. The warrant register was reviewed and bills ordered paid.
20. On motion by Commissioner Monroe, seconded by Commissioner Nelson unanimously carried, the meeting was adjourned.

Attest: _____
Clerk

Chairman

RESOLUTION 2011 –
A RESOLUTION BY THE BOARD OF COUNTY COMMISSIONERS FOR
JEFFERSON COUNTY, FLORIDA, ENCOURAGING THE CREATION OF
A ZONE OF DISCHARGE WITHIN THE BOUNDARIES OF THE
COUNTY'S SOLID WASTE LANDFILL.

WHEREAS, the Florida Department of Environmental Protection has approved and permitted the construction of unlined landfills in Jefferson and other counties within the State; and

WHEREAS, the Florida Department of Environmental Protection has approved and permitted the closure of these unlined landfills; and

WHEREAS, the Florida Department of Environmental Protection has approved and permitted the closure of these landfills; and

WHEREAS, since its closure, the Jefferson County unlined landfill has had little or no impact on the groundwater outside the landfill boundary; and

WHEREAS, since closure of these landfills, EPA and Florida Department of Environmental Protection have adopted more stringent Drinking water Standards intended as Safe Drinking water Standards; and

WHEREAS, the clean-up and other remedial actions required to meet the drinking water standard within the existing landfill boundaries would be cost prohibitive; and

WHEREAS, groundwater from within the boundaries of these landfill will never be used for personal consumption.

BE IT THEREFORE RESOLVED: by the Board of County Commissioners for Jefferson County, Florida, as follows:

The Governor and Legislature of the State of Florida are urged to enact legislation to allow the creation of a Zone of Discharge for ground water within the limits of such closed landfills. This legislation, at a minimum, should provide the following:

1. That the groundwater standards in place at the time of the landfill closure be regarded as the groundwater standard within the Zone of Discharge.

2. That closed Landfill's Zone of Discharge be established at the current or expanded County Property Boundary and upon demonstration that any groundwater degradation will not extend beyond the boundaries of the landfill, no further action be required to meet the groundwater standards within the expanded Zone of Discharge.

PASSED, ADOPTED AND APPROVED this _____ day of March 2011.

**BOARD OF COUNTY COMMISSIONERS
OF JEFFERSON COUNTY, FLORIDA**

(SEAL)

, Chairman

ATTEST:

Clerk of the Court

ORDINANCE _____

AN ORDINANCE OF THE BOARD OF COUNTY COMMISSIONERS OF JEFFERSON COUNTY, FLORIDA, RELATING TO HOMESTEAD EXEMPTIONS; ADOPTING THE ADDITIONAL HOMESTEAD EXEMPTION FOR LOW INCOME SENIORS IN ACCORDANCE WITH SECTION 196.075, FLORIDA STATUTES; PROVIDING FOR SEVERABILITY; PROVIDING FOR DELIVERY TO THE PROPERTY APPRAISER; AND PROVIDING AN EFFECTIVE DATE.

WHEREAS, on November 3, 1998, the electors of the State of Florida approved an amendment to the Constitution of the State of Florida authorizing the Legislature of the State of Florida to allow, by general law, counties or municipalities, for the purpose of their respective tax levies and subject to the provisions of said general law, to grant an additional homestead tax exemption not to exceed \$25,000 to any person who has the legal or equitable title to real estate and maintains thereon the permanent residence of the owner and who has attained the age 65 and whose household income, as defined by general law, does not exceed \$20,000; and

WHEREAS, on June 11, 1999, the Governor of the State of Florida approved Committee Substitute for Committee Substitute for House Bill No. 291 (Chapter 99-341, Laws of Florida, now codified at section 196.075, Florida Statutes), authorizing the Board of County Commissioners of any County to adopt an ordinance to allow an additional homestead exemption of up to \$25,000 for any person who has the legal or equitable title to real estate and maintains thereon the permanent residence of the owner, who has attained age 65, and whose household income does not exceed \$20,000; and

WHEREAS, on November 7, 2006, the electors of the State of Florida approved an amendment to Section 6(f), Article VII of the Constitution of the State of Florida increasing the maximum additional homestead exemption for eligible low income seniors from \$25,000 to \$50,000; and

WHEREAS, on April 9, 2007, the Governor of the State of Florida approved Council Substitute for House Bill No. 333 (Chapter 2007-4, Laws of Florida), amending section 196.075, Florida Statutes, authorizing the Board of County Commissioners of any County to adopt an ordinance to allow an additional homestead exemption of up to \$50,000 for any person who has the legal or equitable title to real estate and maintains thereon the permanent residence of the owner, who has attained age 65, and whose household income does not exceed \$20,000 as adjusted pursuant to section 196.075(3), Florida Statutes; and

WHEREAS, the purpose of this ordinance is to exercise the authority granted to the Board of County Commissioners, by Section 6(f), Article VII of the Constitution of the State of Florida, and section 196.075, Florida Statutes, by granting a homestead exemption of \$50,000 for eligible persons in the Jefferson County, Florida, and that upon delivery of this lawfully executed to the Property Appraiser of Jefferson County, Florida, that said Property Appraiser, take notice of its provisions and adjust the 2012 tax roll for the Jefferson County, Florida, accordingly;

WHEREAS, this Ordinance is adopted under the procedures for adoption of a nonemergency ordinance specified in chapter 125, Florida Statutes; and

WHEREAS, the Board of County Commissioners for Jefferson County, Florida hereby finds and declares that this ordinance is in the best interest of the public health, safety, and welfare of the People of Jefferson County Florida.

NOW, THEREFORE, IT IS ENACTED BY THE BOARD OF COMMISSIONERS OF JEFFERSON COUNTY, FLORIDA, AS FOLLOWS:

SECTION 1. ADDITIONAL HOMESTEAD EXEMPTION. There is hereby granted a homestead exemption as defined in Section 196.075, Florida Statutes, in the amount of _____ thousand dollars (\$_____), for any person who has legal or equitable title to real estate and maintains thereon the permanent residence of the owner,

who has attained age 65, and whose household income does not exceed the amount calculated pursuant to the procedure identified in Section 196.075(3), Florida Statutes.

SECTION 2. SWORN STATEMENT OF HOUSEHOLD INCOME. To be eligible for the homestead exemption provided for by this ordinance, a taxpayer claiming the exemption shall annually submit to the Property Appraiser of Jefferson County, Florida, not later than March 1 of each calendar year, a sworn statement of household income on a form prescribed by the State of Florida Department of Revenue.

SECTION 3. OTHER STATUTORY CONDITIONS. Eligibility for and receipt of the homestead exemption provided for by this ordinance is subject to all applicable Florida law.

SECTION 4. EXEMPTION APPLIES ONLY TO JEFFERSON COUNTY TAXES. The additional homestead exemption granted pursuant to Section 1 above shall apply only to ad valorem real property taxes levied by Jefferson County, Florida.

SECTION 4. DELIVERY TO PROPERTY APPRAISER. Upon enactment, a copy of this ordinance shall be delivered on or before December 1, 2011, to the Property Appraiser of Jefferson County, Florida, allowing the exemption provided for in this ordinance to begin in the year 2012.

SECTION 5. SEVERABILITY. If any provision of this ordinance or its application to any person or circumstance is held invalid, the invalidity does not affect other provisions or applications of this ordinance which can be given effect without the invalid provision or application, and to this end the provisions of this ordinance are severable.

SECTION 6. EFFECTIVE DATE. This ordinance takes effect immediately upon final passage.

PASSED and ADOPTED in regular session by the Board of County
Commissioners of Jefferson County, Florida, on this ____ day of _____,
2011.

BOARD OF COUNTY COMMISSIONERS
JEFFERSON COUNTY, FLORIDA

BY:

STEPHEN FULFORD, Chairperson

ATTEST: _____

ROCK MINE ANALYSIS
FOR
JEFFERSON COUNTY

PREPARED FOR:

BOARD OF COUNTY COMMISSIONERS
JEFFERSON COUNTY, FL



Mr. Stephen Fulford, Chairman
Mr. Danny Monroe
Mr. John Nelson
Mr. Hines Boyd
Mrs. Betsy Barfield
Mr. Roy Schleicher, County Coordinator

February 2011

PROJECT NUMBER 751.032

PREPARED BY



MONTICELLO
187 East Walnut Street
Monticello, FL 32344
P 850.997.2175

PORT ST JOE
324 Marina Drive
Port St. Joe, FL 32456
P 850.227.7200
F 850.227.7215

SANTA ROSA BEACH
877 C.R. 393 North
Santa Rosa Beach, FL 32459
P 850.267.0759
F 866.557.0076

BRISTOL
10490 NW Main St
Bristol, FL 32321
P 850.643.2771
F 850.643.2910

QUINCY
20 E Washington St
Quincy, FL 32351
P 850.875.4751

BLOUNTSTOWN
20684 Central Avenue E
Blountstown, FL 32424
P 850.674.3300
F 850.674.3330

CRAWFORDVILLE
36 Jasper Thomas Rd
Crawfordville, FL 32327
P 850.274.9866

PANAMA CITY
203 Aberdeen Parkway
Panama City, FL 32405
P 850.522.0644
F 850.522.1011

TABLE OF CONTENTS

REPORT

| | |
|-----------|--------------------------|
| SECTION 1 | INTRODUCTION |
| SECTION 2 | EXISTING FACILITY |
| 2.1 | Location |
| 2.2 | History |
| 2.3 | Existing Rock Production |
| 2.4 | Analysis of Material |
| SECTION 3 | ANALYSIS |
| 3.1 | Introduction |
| 3.2 | Lease of the Property |
| 3.3 | Sale of Property |
| 3.4 | Closure of Facility |
| SECTION 4 | CONCLUSIONS |
| SECTION 5 | ALTERNATIVES |

EXHIBITS

| | |
|------------------|--------------------------|
| Exhibit A | General Location Map |
| Exhibit B | Property Deed |
| Exhibit C | Limerock Production |
| Exhibit D | Labor Costs |
| Exhibit E | Equipment Costs |
| Exhibit F | Rental Costs |
| Exhibit G | Geotechnical Report |
| Exhibit H | Market Price of Limerock |

SECTION 1

INTRODUCTION

It is the desire of the Board of County Commissioners in Jefferson County, Florida to evaluate the Existing Facility known as the Jefferson County Rock Mine (the Mine). The Mine's sole product is limerock, which is used primarily as a base material for asphaltic concrete roadways.

Preble-Rish, Inc. (PRI) has evaluated the County's existing mine and its efficiency, based on information provided by County staff. This analysis is to determine the specific cost to the County per ton of material produced at the Mine. This value can then be compared to prices of material produced at neighboring limerock mines. This approach will remove as many "peripheral" costs as possible to allow a comparison of like items. Hauling costs, placing costs, and other necessary costs associated with the use of the material was not taken into consideration due to the variation of fuel costs and placement location.

We utilized information provided by County staff to compile the information for this report. It is important to note that the reporting period for this analysis is relatively short, and there were also "experimental" activities begin performed during the reporting period.

SECTION 2

EXISTING FACILITY

2.1 Location:

The Jefferson County Rock Mine is located in Southern Jefferson County approximately 6.75 miles due East of the intersection of US 98 and SR 59 off of Goose Pasture Road. See **Exhibit A** for a general location map. The Mine is on Parcel Tax ID 28-3S-4E-0000-0012-0000 located in Township 3 North, Range 4 East, and Section 33. The GPS coordinates of the approximate center of the property are 83°56'7.7"W, 30°11'46.6"N. The parcel is 97.59+/- acres and is described in Official Records Book 183 and Page 63 (see **Exhibit B**). This property is located within the geographical boundary of the Suwannee River Water Management District. It should be noted that there are 4 other, privately owned, limerock mines within 5 miles of the subject property.

2.2 History:

Jefferson County Board of County Commissioners (the County) purchased the subject property from the Proctor and Gamble Cellulose Company on January 23, 1990 for \$38,677. The County has been operating the Mine since 1990, using the material to stabilize unpaved parking areas and roadways throughout the County.

2.3 Existing Rock Production:

Based on figures provided by the Jefferson County Road Department (Road Department), the Mine produces approximately **13,908 tons annually** or **1,159 tons monthly**.

This value was calculated by extrapolating the provided production values out to one year. Production of limerock from this mine was provided from September to December, 2010 and can be found attached as **Exhibit C**. These reported values were provided as measured from the crusher to the stockpile located at the Mine. A more accurate estimation of production would be available if the actual values were available over a 12 month period.

2.4 Analysis of Material:

The main factor used to rate or rank the quality of road base material is an LBR value. LBR stand for Limerock Bearing Ratio and can be used to rate many different types of soils. Generally, this is a test that will provide a range of load bearing capacities at different moisture contents in an effort to find the optimum moisture content for the highest bearing capacity.

On December 14, 2010, Ardaman & Associates took a sample of limerock from the stockpile located at the Mine. It is our understanding that this material had already undergone processing and was ready for use. Ardaman & Associates was asked to test the material for carbonates and Limerock Bearing Ratio (LBR). Based on the report by Ardaman & Associates dated January 5, 2011 (see **Exhibit G**), the material being produced is *not* in full compliance with FDOT specification for road base. The LBR value of the road base is required by FDOT to be a *minimum average* of 100, and the material that was tested has a *maximum* LBR value of 50. It should be noted that most native soils in our area that do not contain unusually high percentages of clay, silt, or organics can achieve an average minimum LBR value of 40.

The report also mentions that the gradation of the material that was tested was finer than the typical road base material. This means that the particle sizes in the material are smaller on average than an FDOT approved material. There is a possibility that the smaller particle size distribution is lowering the LBR value slightly, however it is not likely that this is the only factor lowering LBR value. Even though the minimum percentage of carbonates complies with the specification, the LBR value is very low for road base material.

It should be noted that in 2010, the mining operations were relocated on site to access softer material. This is an indication that there is better material on site, but is much harder to obtain with the existing available equipment, thus the rental of the jackhammer for accessing harder material. This is one of the “experimental” activities that has been performed during the analysis period.

During the course of this analysis, there was mention of “admixtures” that may be added to the limerock to increase its strength and stability. We are not aware of any verified material or method of increasing the strength and stability of limerock without the simple addition of harder material.

SECTION 3

ANALYSIS

3.1 Introduction:

Costs of operation can be broken down into two main components: labor and equipment. The cost of labor used in this analysis was provided by the County, as reported by each employee on weekly timesheets. The cost of equipment was analyzed by utilizing the FEMA Cost Codes for equipment currently owned by the County and actual costs for equipment that was leased or rented.

Production of material is the second component that is needed in order to determine a cost per unit of material. The County has provided their production rates for the months of September through December 2010. It should be noted that accurate reporting of the production rates are as critical to the results as accurate reporting of the costs. A longer period of production reporting would provide a more accurate average rate of production.

3.2 Labor:

The County has provided the costs associated with labor as reported on each employee's time sheet. This information can be found in **Exhibit D**. This information was only provided for the months of April through December 2010. We averaged the monthly labor cost associated with the Mine and extrapolated it out to twelve months. Using this method, labor costs per year are approximately **\$160,895.52 annually** or **\$13,407.96 monthly**.

3.3 Equipment:

As previously stated, the cost of equipment comes from actual cost of the rented equipment and the FEMA Cost Codes for the equipment that is owned by the County. The FEMA Cost Codes are provided by FEMA to establish a “market value” for operation of equipment in good mechanical condition, complete with all required attachments. This value includes depreciation, fuel, lubricants, tires, regular maintenance, and other incurred costs. Also, these costs are established for private companies doing work for FEMA and nationally averaged, so the unit costs were reduced by 66.6% to make *sure* that profit is not included.

The County has an off road dump truck in operation at the Mine that was rented for between April and July 2010. Beginning in August of 2010, the County entered a lease-purchase agreement with the equipment supplier, and the equipment became “owned” instead of rented for the purposes of this analysis. This analysis will assume that this vehicle is owned by the County to generate an average annual cost estimation.

Equipment costs for the equipment that is owned by the County can be found attached as **Exhibit E**. These costs were only reported for April through December 2010, and they are calculated to be **\$73,240.79 annually** or **\$6,103.40 monthly**.

Rentals were taken as reported and added to the yearly cost of equipment *without* extrapolating the value out to a full year. We feel that this is the best way to estimate the yearly cost without including costs that were not incurred. Rental costs are estimated to be **\$45,500 annually** or **\$3,791.67 monthly**. It should be noted that the rental costs were reported to be as high as \$21,500 per month. It should also be noted that these reported rental costs included a period of higher rental costs than usual due to a higher need for limerock than usual

or “experimental” activities during the reporting period. Rental costs incurred between April and December 2010 can be found attached as **Exhibit F**.

3.4 Total Costs:

We have calculated the total operational cost to be **\$279,636.31 annually** or **\$23,303.03 monthly**. This value is based on the *extrapolated* labor cost explained in Section 3.2 above, the *extrapolated* equipment cost explained in Section 3.3 above, and the *reported* rental costs explained in Section 3.3 above.

3.5 Market Value:

Based on a bid provided in response to a request for bids in May of 2009, the cost of limerock is **\$4.50 per ton** if it is picked up from the A-Mining Group in Cabbage Grove. This bid is attached as **Exhibit H**. It should be noted that this material is much better suited for road base than the material that is currently being produced at the Jefferson County Rock Mine.

SECTION 4

CONCLUSIONS

The purpose of this analysis is to outline the cost per ton of limerock produced at the Mine. This cost per ton can then be compared to prices per ton as provided by neighboring mines. The outcome of this analysis is that each ton of limerock costs the County approximately **\$20.11 per ton**. The cost of limerock at the neighboring A-Mining Group in Cabbage Grove is **\$4.50 per ton**. The County is currently paying approximately **\$15.11 or 447% more per ton** than market price for a material that is not within FDOT specification.

It is important to note that these costs do not include the cost of hauling or placement, which are necessary costs in the use of the limerock as road stabilization.

There are several items that were identified during the investigation for this analysis that should be noted:

- 1) The available information was reported over a relatively short time period. Reporting of a longer period of time will produce a more accurate unit cost of material. Also, “experimental” activities were performed during the reporting period that may have affected the cost of operations.
- 2) The FEMA Cost Codes were reduced by 66.6% due to the unavailability of information on the actual costs of equipment that are owned outright by the County. More accurate tracking will result in more accurate costs associated with operating this equipment.
- 3) These costs and this analysis should not be used for budgeting purposes. This report is an analysis of information that was provided by County staff and was minimally modified to

correct duplicate reporting. This report is an analysis of the cost required to mine, process, and stockpile the material. This report neglects other costs associated with the use of limerock such as hauling and spreading.

- 4) The material being produced by Jefferson County is not compliant with FDOT specifications. The material that can be purchased from a neighboring mine is within FDOT specifications. This should be considered when comparing the two items, since they are not equal to each other.

SECTION 5

ALTERNATIVES

The County may consider several options in an effort to increase the efficiency of the Mine. Based on the above information, two ways to increase efficiency are to reduce cost and to increase production.

The current production levels seem low in comparison to the cost. Operating at the current estimated cost, the Mine would need to produce 5,178 tons per month to have comparable rates to the private market. This level of production is not likely an option without increasing labor and equipment, and therefore costs. With each increase in cost, the production will need increase to maintain comparison with the private market. One option to consider is investigate increases in equipment and manpower necessary to produce 10,000 tons per month.

One of the previously mentioned goals to increase efficiency is to reduce the County's costs associated with operating the Mine. If the County only needs 1,000 tons per month of rock, it would need to pursue options that would reduce the cost down to \$5,216 per month. One option to achieve this would be to lease the mine to a private contractor or operator. A part of this agreement could be to provide a pre-determined amount of material to the County. Depending on the agreement that is reached, this could be profitable for the County overall.

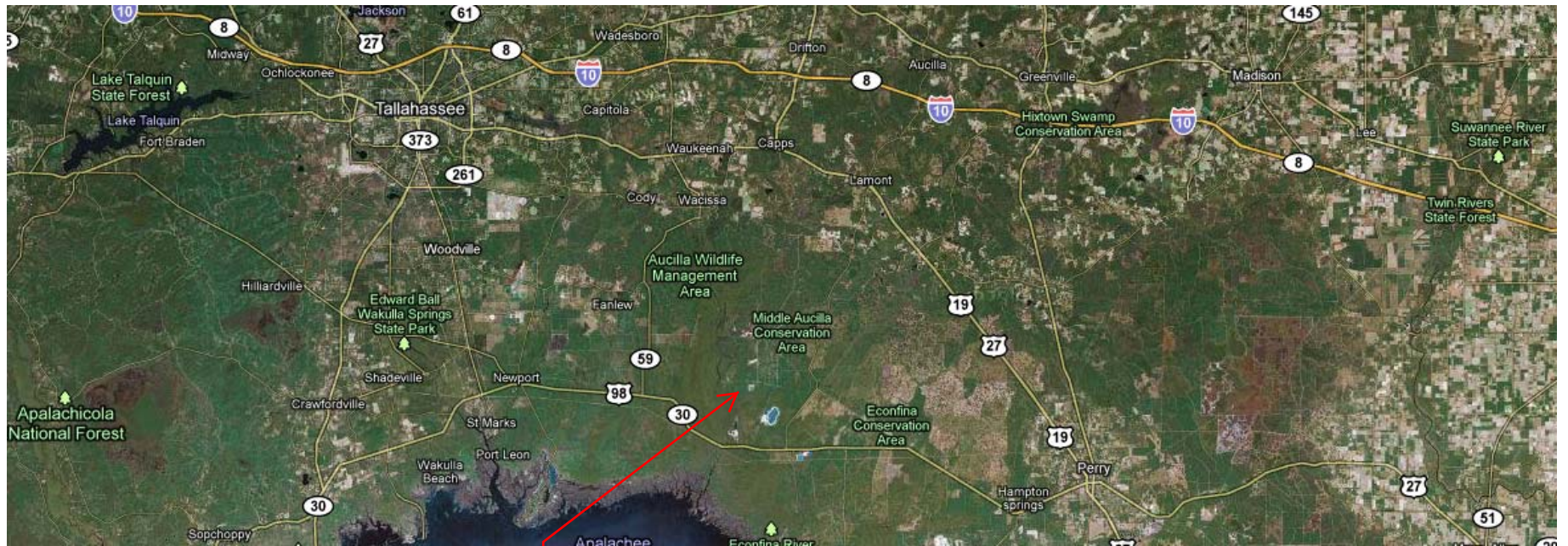
The option to reduce operations to an absolute minimum level should also be considered. It is our understanding that there is no minimum amount of material that must be produced to maintain the Mining Permit, so full time equipment and manpower on-site may not be necessary. This would allow manpower to be focused on other needs within the County. The equipment that is dedicated to the

Mine can be sold, or returned to the Lessee, thus reducing costs to the County. Or, it may be determined that this equipment would be more useful in other areas of the County.

In order to identify the *best* alternative to increase efficiency, the County would need to outline the desired goals and list acceptable alternatives. From that point, we could investigate options to determine which may be most viable or which may be most desired.

We sincerely appreciate the opportunity to assist the County with this analysis. We hope that this analysis exceeds all expectations and we are looking forward to continuing to serve the County for many more years.

General Location Map



Subject Property

Subject Property



Property Deed

FILED FOR RECORD

61307

7:00 PM
JAN 23 1989

IN THE PUBLIC RECORDS
OF JEFFERSON CO., FLA.
ELEANOR B. HAWKINS
CLERK OF CIRCUIT COURT

DEED

THIS INDENTURE, made as of the 23rd day of January, 1989, between the Grantor, THE PROCTER & GAMBLE CELLULOSE COMPANY, a corporation organized and existing under the laws of the State of Ohio and qualified to do business in the State of Florida, and having a place of business in Perry, Taylor County, Florida, and the Grantee, JEFFERSON COUNTY, a political subdivision of the STATE OF FLORIDA;

WITNESSETH:

That the said Grantor, for and in consideration of the sum of TEN DOLLARS (\$10.00), to it in hand paid by the said Grantee, receipt whereof is hereby acknowledged, has granted, bargained and sold to the said Grantee, its successors and assigns forever, the following described land, situate, lying and being in the County of Jefferson, State of Florida, and being more particularly described in Exhibit "A" hereto attached.

PARCEL A--97.59 acres: Commence at the Southwest corner of Section 33, Township 3 South, Range 4 East, and run North 23 degrees 48 minutes 32 seconds East (Bearing Base), 11,654.04 feet to a concrete monument; thence run South 69 degrees 22 minutes 12 seconds West, 171.89 feet to a concrete monument; thence run South 65 degrees 35 minutes 12 seconds West, 343.64 feet to a concrete monument; thence run South 47 degrees 56 minutes 20 seconds West, 303.57 feet to a concrete monument; thence run South 00 degrees 27 minutes 38 seconds West, 1694.66 feet to a concrete monument; thence run South 68 degrees 05 minutes 35 seconds West, 1255.87 feet to a concrete monument; thence run North 84 degrees 13 minutes 17 seconds West, 70.84 feet to a concrete monument and the Point of Beginning; thence from said Point of Beginning continue North 84 degrees 13 minutes 17 seconds West, 575.71 feet to a concrete monument; thence run South 68 degrees 16 minutes 05 seconds West, 236.91 feet to a concrete monument; thence run South 78 degrees 57 minutes 09 seconds West, 1186.29 feet to a concrete monument; thence run North 01 degrees 29 minutes 56 seconds East, 602.45 feet to a concrete monument; thence run North 31 degrees 13 minutes 02 seconds West, 120.01 feet to a concrete monument; thence run North 09 degrees 05 minutes 41 seconds West, 136.67 feet to a concrete monument; thence run North 01 degrees 28 minutes 35 seconds West, 1433.41 feet to a concrete monument; thence run North 10 degrees 47 minutes 48 seconds East, 111.49 feet to a concrete monument; thence run East, 1869.09 feet to a concrete monument; thence run South 04 degrees 09 minutes 28 seconds East, 1307.36 feet to a concrete monument; thence run South 05 degrees 22 minutes 55 seconds East, 824.93 feet to the Point of Beginning. Said parcel contains 97.59 acres and is located in Section 28, Township 3 South, Range 4 East, Jefferson County, Florida.

TOGETHER with a non-exclusive easement for ingress and

ORBK PAGE

0183 0063

JEFFERSON CO., FL

This instrument was prepared in the law office of AUSLEY, McMULLEN, McGENEE, CAROLINERS & PROCTOR Washington Square Building, Tallahassee, Florida under the supervision of M. JULIAN PROCTOR, JR.

egress over, along and across the following described property: PARCEL B (40-foot road easement)--1.97 acres: Commence at the Southwest corner of Section 33, Township 3 South, Range 4 East and run North 23 degrees 48 minutes 32 seconds East (Bearing Base), 11,654.04 feet to a concrete monument; thence run South 69 degrees 22 minutes 12 seconds West, 171.89 feet to a concrete monument; thence run South 65 degrees 35 minutes 12 seconds West, 343.64 feet to a concrete monument; thence run South 47 degrees 56 minutes 20 seconds West, 303.57 feet to a concrete monument; thence run South 00 degrees 27 minutes 38 seconds West, 1694.66 feet to a concrete monument; thence run South 68 degrees 05 minutes 35 seconds West, 1255.87 feet to a concrete monument; thence run North 84 degrees 13 minutes 17 seconds West, 70.84 feet to a concrete monument; thence run North 05 degrees 22 minutes 55 seconds West, 824.93 feet to a concrete monument and the Point of Beginning; thence from said Point of Beginning run North 04 degrees 09 minutes 28 seconds West, 1307.36 feet to a concrete monument; thence continue North 04 degrees 09 minutes 28 seconds West, 844.06 feet to an iron pin on the Southerly right of way of the Goose Pasture Road; thence run North 88 degrees 56 minutes 13 seconds East along said Southerly right of way, 40.06 feet to an iron pin; thence run South 04 degrees 09 minutes 28 seconds East, 2148.83 feet to a concrete monument; thence run South 85 degrees 13 minutes 49 seconds West, 40.00 feet to the Point of Beginning. Said parcel contains 1.97 acres and is located in Section 21 and Section 28, Township 3 South, Range 4 East, Jefferson County, Florida.

Property Appraiser's Identification No.
0000-0010-0000

TOGETHER WITH Grantor's rights to all oil, gas and minerals in, upon, or under said land, which rights are hereby conveyed but title to which is not warranted.

SUBJECT TO easements, reservations, zoning ordinances, covenants, restrictions of record, all outstanding mineral rights and interests, if any, and current ad valorem taxes.

And the said Grantor does hereby warrant the title to said land and will defend the same against the lawful claims of all persons claiming by, through or under said Grantor.

IN WITNESS WHEREOF, the Grantor has caused these presents to be executed in its corporate name by its duly authorized officer as of the day and year first above written.

Signed, sealed and delivered
in the presence of:

THE PROCTER & GAMBLE CELLULOSE
COMPANY

Barbara L. Moore
Spiley M. Spear

By: *David D. Schores*
David D. Schores
As its Vice President

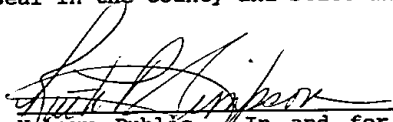
APPROVED FOR EXECUTION
[Signature]

STATE OF TENNESSEE

COUNTY OF SHELBY

I CERTIFY that on this 13th day of November, 1989, before me personally appeared DAVID C. SCHORES, Vice President of THE PROCTER & GAMBLE CELLULOSE COMPANY, an Ohio corporation, to me known to be the individual and officer described in and who executed the foregoing instrument, and acknowledged the execution thereof to be his free act and deed as such officer thereunto duly authorized, and that the said instrument is the act and deed of said corporation.

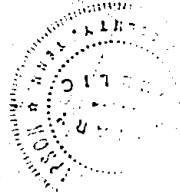
WITNESS my hand and seal in the County and State and on the date aforesaid.


Notary Public In and for the
State and County aforesaid

My Commission Expires:

My Commission Expires Nov. 15, 1992

(Notarial Seal)

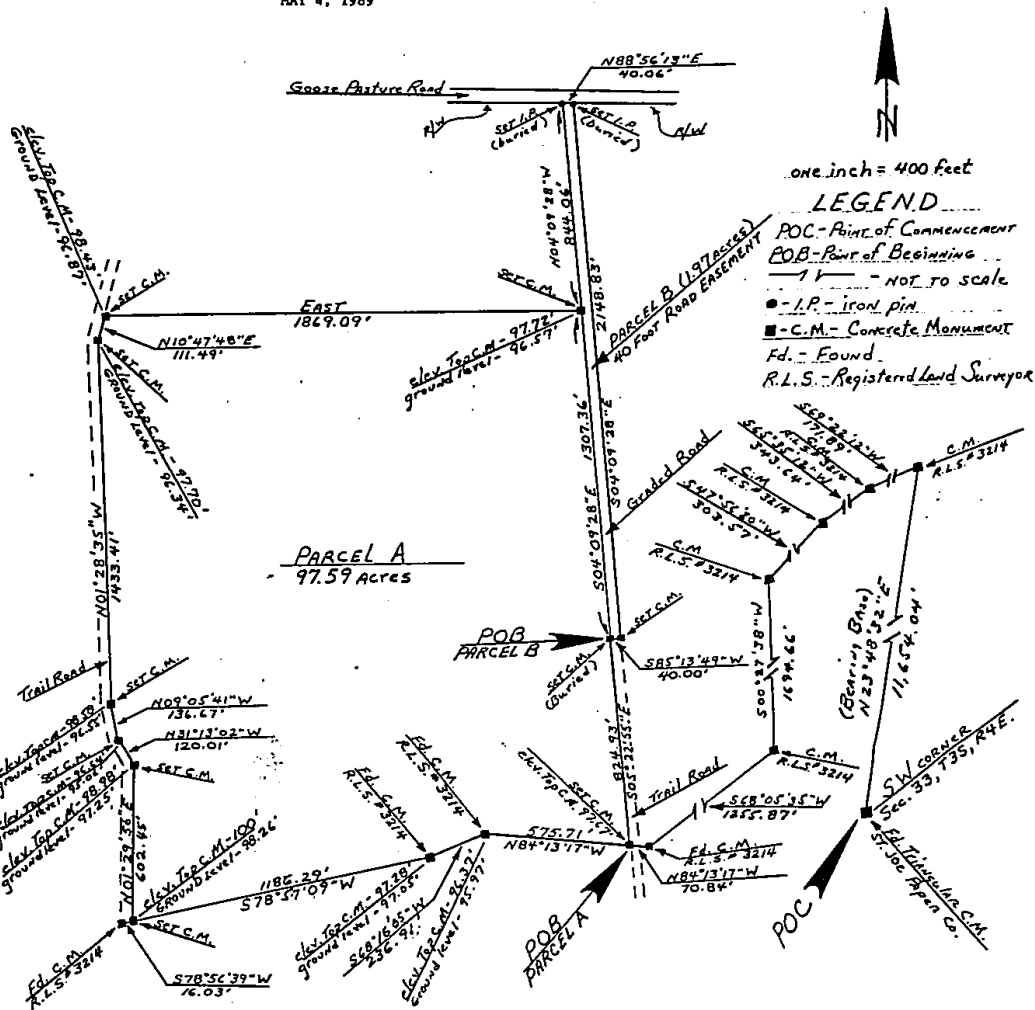


MJP\PGC\jefferso.dee

3

ORBK PAGE
0183 0065
JEFFERSON CO., FL

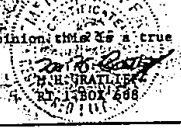
BOUNDARY SURVEY FOR PROCTER AND GAMBLE CELLULOSE CO.
SECTION 28 AND SECTION 28, T3S, R4E
JEFFERSON COUNTY, FLORIDA
MAY 4, 1989



DESCRIPTION: PARCEL A - 97.59 ACRES
 Commence at the SW corner of Section 33, T3S, R4E and run N 23° 48' 32" E (Bearing Base), 11,654.04 feet to a concrete monument; thence run S 69° 22' 12" W, 171.89 feet to a concrete monument; thence run S 65° 35' 12" W, 343.64 feet to a concrete monument; thence run S 47° 56' 20" W, 303.57 feet to a concrete monument; thence run S 00° 27' 38" W, 1694.66 feet to a concrete monument; thence run S 68° 05' 35" W, 1255.87 feet to a concrete monument; thence run N 84° 13' 17" W, 70.84 feet to a concrete monument and the Point of Beginning; thence from said POB continue N 84° 13' 17" W, 575.71 feet to a concrete monument; thence run S 68° 16' 05" W, 236.91 feet to a concrete monument; thence run S 78° 57' 09" W, 1186.29 feet to a concrete monument; thence run N 01° 29' 56" E, 602.45 feet to a concrete monument; thence run N 31° 13' 02" W, 120.01 feet to a concrete monument; thence run N 09° 05' 41" W, 136.67 feet to a concrete monument; thence run N 01° 28' 35" W, 1433.41 feet to a concrete monument; thence run N 10° 47' 48" E, 111.49 feet to a concrete monument; thence run East, 1869.09 feet to a concrete monument; thence run S 05° 22' 55" E, 824.93 feet to the Point of Beginning. Said parcel contains 97.59 acres and is located in Section 28, T3S, R4E, Jefferson County, Florida.

DESCRIPTION: PARCEL B (40 FOOT ROAD EASEMENT) - 1.97 ACRES
 Commence at the SW corner of Section 33, T3S, R4E and run N 23° 48' 32" E (Bearing Base), 11,654.04 feet to a concrete monument; thence run S 69° 22' 12" W, 171.89 feet to a concrete monument; thence run S 65° 35' 12" W, 343.64 feet to a concrete monument; thence run S 47° 56' 20" W, 303.57 feet to a concrete monument; thence run S 00° 27' 38" W, 1694.66 feet to a concrete monument; thence run S 68° 05' 35" W, 1255.87 feet to a concrete monument; thence run N 84° 13' 17" W, 70.84 feet to a concrete monument; thence run N 05° 22' 55" W, 824.93 feet to a concrete monument and the Point of Beginning; thence from said POB run N 04° 09' 28" W, 1307.36 feet to a concrete monument; thence continue N 04° 09' 28" W, 844.06 feet to an iron pin on the Southerly R/W of the Goose Pasture Road; thence run N 88° 56' 13" E, along said Southerly R/W, 40.06 feet to an iron pin; thence run S 04° 09' 28" E, 2148.83 feet to a concrete monument; thence run S 85° 13' 45" W, 40.00 feet to the Point of Beginning. Said parcel contains 1.97 acres and is located in Section 21 and Section 28, T3S, R4E, Jefferson County, Florida.

I hereby certify that in my opinion this is a true representation of the above described property and complies with Chapter 472.027 F.S.



REGISTERED LAND SURVEYOR F.R.C. #2216
 PERRY, FLORIDA 32347

Limerock Production

Jefferson County Road Department - Mine Production Summary

Tons Lime Rock Produced
from Crusher to Stock pile

| | | | | | |
|-------------|---------------------|---------------------|--------------|--|-----------------------------------|
| Week of 9/6 | Week of 9/13 720 | Week of 9/20 320 | Week of 9/27 | | Month Total 1040 |
|-------------|---------------------|---------------------|--------------|--|-----------------------------------|

| | | | | | |
|----------------------|---------------|---------------|----------------------|--|-----------------------------------|
| Week of 10/04 940 | Week of 10/11 | Week of 10/18 | Week of 10/25 800 | | Month Total 1740 |
|----------------------|---------------|---------------|----------------------|--|-----------------------------------|

| | | | | | |
|----------------------|---------------|----------------------|--------------------|--|----------------------------------|
| Week of 11/04 315 | Week of 11/11 | Week of 11/18 480 | Week of 11/25 0 | | Month Total 795 |
|----------------------|---------------|----------------------|--------------------|--|----------------------------------|

| | | | | | |
|----------------------|---------------------|--------------------|--------------------|----------------------|-----------------------------------|
| Week of 12/01 340 | Week of 12/6 440 | Week of 12/13 0 | Week of 12/20 0 | Week of 12/27 280 | Month Total 1060 |
|----------------------|---------------------|--------------------|--------------------|----------------------|-----------------------------------|

| |
|-----------------------------|
| Total 4635 |
|-----------------------------|

Labor Costs

FEDERAL EMERGENCY MANAGEMENT AGENCY
FORCE ACCOUNT LABOR RECORD

| | | | | |
|--------------------------|-------------|----------------------|----------|------------|
| APPLICANT Mine | PROJECT NO. | CATEGORY C | FIPS NO. | DISASTER # |
|--------------------------|-------------|----------------------|----------|------------|

| Name | Title | STATUS | REG / OT | DATES & HOURS WORKED EACH WEEK | | | | | | | | | | | | | | | | | | IS THIS A PILOT PROGRAM PW? | | | | | | | | | | |
|---------------|-------------------|--------|----------|--------------------------------|-------------|--------------|--------------|------------|-----|-----|-----|-----|-----|-----|-----|-----|------|------|------|------|------|-----------------------------|-------|----------|---------------|----------|-----------|--|--|--|--|--|
| | | | | 3/28 | 3/29 | 3/30 | 3/31 | 4/1 | 4/2 | 4/3 | 4/4 | 4/5 | 4/6 | 4/7 | 4/8 | 4/9 | 4/10 | 4/11 | 4/12 | 4/13 | 4/14 | 4/15 | 4/16 | 4/17 | RATES / COSTS | | | | | | | |
| | | | | TOTAL HRS | HOURLY RATE | BENEFIT RATE | TOTAL HOURLY | TOTAL COST | | | | | | | | | | | | | | | | | | | | | | | | |
| Gohlke, Henry | Safety Supervisor | FT | REG | | | | | | | | | | | | | | | 3.0 | 5.0 | 5.0 | | | 13.00 | \$ 13.97 | 0.4934 | \$ 20.86 | \$ 271.22 | | | | | |
| | | FT | OT | | | | | | | | | | | | | | | | | | | | | \$ 20.96 | 0.2756 | \$ 26.73 | \$ - | | | | | |
| | | | REG | | | | | | | | | | | | | | | | | | | | | \$ - | | \$ - | \$ - | | | | | |
| | | | OT | | | | | | | | | | | | | | | | | | | | | \$ - | | \$ - | \$ - | | | | | |
| | | | REG | | | | | | | | | | | | | | | | | | | | | \$ - | | \$ - | \$ - | | | | | |
| | | | OT | | | | | | | | | | | | | | | | | | | | | \$ - | | \$ - | \$ - | | | | | |
| | | | REG | | | | | | | | | | | | | | | | | | | | | \$ - | | \$ - | \$ - | | | | | |
| | | | OT | | | | | | | | | | | | | | | | | | | | | \$ - | | \$ - | \$ - | | | | | |
| | | | REG | | | | | | | | | | | | | | | | | | | | | \$ - | | \$ - | \$ - | | | | | |
| | | | OT | | | | | | | | | | | | | | | | | | | | | \$ - | | \$ - | \$ - | | | | | |
| | | | REG | | | | | | | | | | | | | | | | | | | | | \$ - | | \$ - | \$ - | | | | | |
| | | | OT | | | | | | | | | | | | | | | | | | | | | \$ - | | \$ - | \$ - | | | | | |
| | | | REG | | | | | | | | | | | | | | | | | | | | | \$ - | | \$ - | \$ - | | | | | |
| | | | OT | | | | | | | | | | | | | | | | | | | | | \$ - | | \$ - | \$ - | | | | | |
| | | | REG | | | | | | | | | | | | | | | | | | | | | \$ - | | \$ - | \$ - | | | | | |
| | | | OT | | | | | | | | | | | | | | | | | | | | | \$ - | | \$ - | \$ - | | | | | |
| | | | REG | | | | | | | | | | | | | | | | | | | | | \$ - | | \$ - | \$ - | | | | | |
| | | | OT | | | | | | | | | | | | | | | | | | | | | \$ - | | \$ - | \$ - | | | | | |

| | | | | |
|--|--------------------------|----------------|--------------------|----------------------|
| | TOTAL HOURS | 13.00 | REG TIME SUBTOTAL | \$ 271.22 |
| | GRAND TOTAL HOURS | 6610.00 | O/T SUBTOTAL | \$ - |
| | EET REG HOURS | 13.00 | REG GRAND TOTAL | \$ 116,108.60 |
| | HEET OT HOURS | | O/T GRAND TOTAL | \$ 4,462.95 |
| | | | GRAND TOTAL | \$ 120,571.55 |

I certify that the above information was obtained from Payroll records, invoices, or other documents that are available for audit.

| | | |
|-----------|-------|------|
| CERTIFIED | TITLE | DATE |
|-----------|-------|------|

FEDERAL EMERGENCY MANAGEMENT AGENCY
FORCE ACCOUNT LABOR RECORD

| | | | | | | |
|-----------|-------------|----------|----------|------------|--|--|
| APPLICANT | PROJECT NO. | CATEGORY | FIPS NO. | DISASTER # | | |
| Mine | | C | | FEMA | | |

| Name | Title | STATUS | REG / OT | DATES & HOURS WORKED EACH WEEK | | | | | | | | | | | | | | | | | IS THIS A PILOT PROGRAM PW? | | | | | | | | |
|---------------|---------------------|--------|----------|--------------------------------|------|------|------|------|------|------|------|------|------|------|------|------|-----|-----|-----|-----|-----------------------------|------|------|-------|-----------|-------------|--------------|--------------|-------------|
| | | | | 4/18 | 4/19 | 4/20 | 4/21 | 4/22 | 4/23 | 4/24 | 4/25 | 4/26 | 4/27 | 4/28 | 4/29 | 4/30 | 5/1 | 5/2 | 5/3 | 5/4 | 5/5 | 5/6 | 5/7 | 5/8 | TOTAL HRS | HOURLY RATE | BENEFIT RATE | TOTAL HOURLY | TOTAL COST |
| | | | | | | | | | | | | | | | | | | | | | | | | | | | | | |
| Gohlke, Henry | Safety Supervisor | FT | REG | | 8.0 | 10.0 | 10.0 | | | | | | 8.0 | 10.0 | 8.0 | | | | | | | | | | 64.00 | \$ 13.97 | 0.4934 | \$ 20.86 | \$ 1,335.24 |
| | | FT | OT | | | | | | | | | | | | | | | | | | | | | | | \$ 20.96 | 0.2756 | \$ 26.73 | \$ - |
| Self, James | Field Supervisor | FT | REG | | | | | | | | | | | | | | | | | | | | | | \$ 14.00 | 0.4930 | \$ 20.90 | \$ - | |
| | | FT | OT | | | | | | | | | | | | | | | | | | | | | | \$ 21.00 | 0.2756 | \$ 26.79 | \$ - | |
| Harvey, David | Road Superintendent | E | REG | | | | | | | | | | | | | | | | | | | 10.0 | 10.0 | 20.00 | \$ 20.38 | 0.4382 | \$ 29.31 | \$ 586.22 | |
| | | E | OT | | | | | | | | | | | | | | | | | | | | | | \$ - | 0.2756 | \$ - | \$ - | |
| | | | REG | | | | | | | | | | | | | | | | | | | | | | \$ - | | \$ - | \$ - | |
| | | | OT | | | | | | | | | | | | | | | | | | | | | | \$ - | | \$ - | \$ - | |
| | | | REG | | | | | | | | | | | | | | | | | | | | | | \$ - | | \$ - | \$ - | |
| | | | OT | | | | | | | | | | | | | | | | | | | | | | \$ - | | \$ - | \$ - | |
| | | | REG | | | | | | | | | | | | | | | | | | | | | | \$ - | | \$ - | \$ - | |
| | | | OT | | | | | | | | | | | | | | | | | | | | | | \$ - | | \$ - | \$ - | |
| | | | REG | | | | | | | | | | | | | | | | | | | | | | \$ - | | \$ - | \$ - | |
| | | | OT | | | | | | | | | | | | | | | | | | | | | | \$ - | | \$ - | \$ - | |
| | | | REG | | | | | | | | | | | | | | | | | | | | | | \$ - | | \$ - | \$ - | |
| | | | OT | | | | | | | | | | | | | | | | | | | | | | \$ - | | \$ - | \$ - | |
| | | | REG | | | | | | | | | | | | | | | | | | | | | | \$ - | | \$ - | \$ - | |
| | | | OT | | | | | | | | | | | | | | | | | | | | | | \$ - | | \$ - | \$ - | |
| | | | REG | | | | | | | | | | | | | | | | | | | | | | \$ - | | \$ - | \$ - | |
| | | | OT | | | | | | | | | | | | | | | | | | | | | | \$ - | | \$ - | \$ - | |

| | | | |
|--------------------------|----------------|--------------------|----------------------|
| TOTAL HOURS | 84.00 | REG TIME SUBTOTAL | \$ 1,921.46 |
| GRAND TOTAL HOURS | 6610.00 | O/T SUBTOTAL | \$ - |
| EET REG HOURS | 84.00 | REG GRAND TOTAL | \$ 116,108.60 |
| HEET OT HOURS | | O/T GRAND TOTAL | \$ 4,462.95 |
| | | GRAND TOTAL | \$ 120,571.55 |

I certify that the above information was obtained from Payroll records, invoices, or other documents that are available for audit.

| | | |
|-----------|-------|------|
| CERTIFIED | TITLE | DATE |
|-----------|-------|------|

FEDERAL EMERGENCY MANAGEMENT AGENCY
FORCE ACCOUNT LABOR RECORD

| | | | | | |
|-----------|-------------|----------|----------|------------|--|
| APPLICANT | PROJECT NO. | CATEGORY | FIPS NO. | DISASTER # | |
| Mine | | C | | FEMA | |

| Name | Title | STATUS | REG / OT | DATES & HOURS WORKED EACH WEEK | | | | | | | | | | | | | | | | | | IS THIS A PILOT PROGRAM PW? | | | | | | | | | | |
|------------------|-------------------------|--------|----------|--------------------------------|-------------|--------------|--------------|------------|-----|-----|-----|-----|------|------|------|------|------|------|------|------|------|-----------------------------|------|------|---------------|--|--------|----------|--------|----------|-------------|------|
| | | | | 5/30 | 5/31 | 6/1 | 6/2 | 6/3 | 6/4 | 6/5 | 6/6 | 6/7 | 6/8 | 6/9 | 6/10 | 6/11 | 6/12 | 6/13 | 6/14 | 6/15 | 6/16 | 6/17 | 6/18 | 6/19 | RATES / COSTS | | | | | | | |
| | | | | TOTAL HRS | HOURLY RATE | BENEFIT RATE | TOTAL HOURLY | TOTAL COST | | | | | | | | | | | | | | | | | | | | | | | | |
| Ramsey, Bill | Equip oper 3 | FT | REG | | | | 10.0 | 10.0 | | | | | 10.0 | 10.0 | 10.0 | 10.0 | | | | 10.0 | 10.0 | 10.0 | 10.0 | | | | 100.00 | \$ 11.00 | 0.5408 | \$ 16.95 | \$ 1,694.89 | |
| Frazier, Mack | Road Equipment Operator | FT | REG | | | 10.0 | 10.0 | | | | | | 10.0 | 10.0 | 10.0 | | | | 10.0 | | | | | | | | 70.00 | \$ 10.23 | 0.5576 | \$ 15.93 | \$ 1,115.39 | |
| Adams, Eric | Road Team Leader | FT | REG | | | | | | | | | | 10.0 | 10.0 | 10.0 | | | | 10.0 | 10.0 | | | | | | | 50.00 | \$ 11.99 | 0.5224 | \$ 18.25 | \$ 912.68 | |
| Gohlke, Henry | Safety Supervisor | FT | REG | | 10.0 | | | | | | | | 10.0 | | | | | | | 10.0 | | | | | | | 30.00 | \$ 13.97 | 0.4934 | \$ 20.86 | \$ 625.89 | |
| Schmigel, Joanne | Road Equipment Operator | FT | REG | | | 10.0 | 10.0 | 10.0 | | | | | 10.0 | 10.0 | 10.0 | | | | 10.0 | 10.0 | 10.0 | 10.0 | | | | | 100.00 | \$ 11.96 | 0.5229 | \$ 18.21 | \$ 1,821.41 | |
| Jones, Johnny | Road Equipment Operator | FT | REG | | | 10.0 | 10.0 | 10.0 | | | | | 10.0 | 10.0 | 10.0 | | | | | | 10.0 | | 10.0 | | | | 80.00 | \$ 10.30 | 0.5560 | \$ 16.03 | \$ 1,282.11 | |
| Wolfe, Steven | Road Equipment Operator | FT | REG | | | | 10.0 | 10.0 | | | | | 10.0 | | | | | | | | | | | | | | 30.00 | \$ 13.33 | 0.5018 | \$ 20.02 | \$ 600.59 | |
| Self, James | Field Supervisor | FT | REG | | 5.0 | | | | | | | | 5.0 | | | | | | | 5.0 | | | | | | | 15.00 | \$ 14.00 | 0.4930 | \$ 20.90 | \$ 313.54 | |
| Harvey, David | Road Superintendent | E | REG | | 5.0 | | | | | | | | 5.0 | | | | | | | 5.0 | | | | | | | 15.00 | \$ 20.38 | 0.4382 | \$ 29.31 | \$ 439.66 | |
| Williamson, John | Mech Helper | FT | REG | | 5.0 | | | | | | | | 5.0 | | | | | | | 5.0 | | | | | | | 15.00 | \$ 11.33 | 0.5343 | \$ 17.38 | \$ 260.76 | |
| Tangway, James | Shop Leader | FT | REG | | 5.0 | | | | | | | | 5.0 | | | | | | | 5.0 | | | | | | | 15.00 | \$ 16.42 | 0.4672 | \$ 24.09 | \$ 361.38 | |
| | | | REG | | | | | | | | | | | | | | | | | | | | | | | | | \$ - | | \$ - | \$ - | |
| | | | OT | | | | | | | | | | | | | | | | | | | | | | | | | | \$ - | | \$ - | \$ - |

| | | | |
|--------------------------|----------------|--------------------|----------------------|
| TOTAL HOURS | 520.00 | REG TIME SUBTOTAL | \$ 9,428.30 |
| GRAND TOTAL HOURS | 6610.00 | O/T SUBTOTAL | \$ - |
| EET REG HOURS | 520.00 | REG GRAND TOTAL | \$ 116,108.60 |
| HEET OT HOURS | | O/T GRAND TOTAL | \$ 4,462.95 |
| | | GRAND TOTAL | \$ 120,571.55 |

I certify that the above information was obtained from Payroll records, invoices, or other documents that are available for audit.

| | | |
|-----------|-------|------|
| CERTIFIED | TITLE | DATE |
|-----------|-------|------|

Revised Jan-07

FEDERAL EMERGENCY MANAGEMENT AGENCY
FORCE ACCOUNT LABOR RECORD

| | | | | | | | |
|-----------|--|-------------|----------|----------|------------|--|--|
| APPLICANT | | PROJECT NO. | CATEGORY | FIPS NO. | DISASTER # | | |
| Mine | | | C | | FEMA | | |

| Name | Title | STATUS | REG / OT | DATES & HOURS WORKED EACH WEEK | | | | | | | | | | | | | | | | | IS THIS A PILOT PROGRAM PW? | | | | | | | | | | | | | |
|-------------------|-------------------------|--------|----------|--------------------------------|-------------|--------------|--------------|------------|------|------|------|------|------|------|------|------|-----|-----|-----|-----|-----------------------------|------|------|------|---------------|--|-------|----------|----------|----------|-------------|-------------|-----------|-----------|
| | | | | 6/20 | 6/21 | 6/22 | 6/23 | 6/24 | 6/25 | 6/26 | 6/27 | 6/28 | 6/29 | 6/30 | 7/1 | 7/2 | 7/3 | 7/4 | 7/5 | 7/6 | 7/7 | 7/8 | 7/9 | 7/10 | RATES / COSTS | | | | | | | | | |
| | | | | TOTAL HRS | HOURLY RATE | BENEFIT RATE | TOTAL HOURLY | TOTAL COST | | | | | | | | | | | | | | | | | | | | | | | | | | |
| Ramsey, Williliam | Road Equipment Operator | FT | REG | | 10.0 | | | | | | | | 10.0 | 10.0 | 10.0 | 10.0 | | | | | 10.0 | 10.0 | 10.0 | | | | 80.00 | \$ 11.00 | 0.5408 | \$ 16.95 | \$ 1,355.91 | | | |
| | | FT | OT | | | | | | | | | | | | | | | | | | | | | | | | | | \$ 16.50 | 0.2756 | \$ 21.05 | \$ - | | |
| Frazier, Mack | Road Equipment Operator | FT | REG | | | | | | | | | | 10.0 | 10.0 | 10.0 | | | | | | | 10.0 | 10.0 | 10.0 | | | | 60.00 | \$ 10.23 | 0.5576 | \$ 15.93 | \$ 956.05 | | |
| | | FT | OT | | | | | | | | | | | | | | | | | | | | | | | | | | \$ 15.35 | 0.2756 | \$ 19.57 | \$ - | | |
| Adams, Eric | Road Team Leader | FT | REG | | | | | | | | | | | | | | | | | | | | 10.0 | | | | | | 10.00 | \$ 11.99 | 0.5224 | \$ 18.25 | \$ 182.54 | |
| | | FT | OT | | | | | | | | | | | | | | | | | | | | | | | | | | \$ 17.99 | 0.2756 | \$ 22.94 | \$ - | | |
| Gohlke, Henry | Safety Supervisor | FT | REG | | 10.0 | | | | | | | 10.0 | | | | | | | | | | 10.0 | | | | | | | 30.00 | \$ 13.97 | 0.4934 | \$ 20.86 | \$ 625.89 | |
| | | FT | OT | | | | | | | | | | | | | | | | | | | | | | | | | | \$ 20.96 | 0.2756 | \$ 26.73 | \$ - | | |
| Schmigel, Joanne | Road Equipment Operator | FT | REG | | 10.0 | | 10.0 | | | | | 10.0 | 10.0 | | 10.0 | | | | | | | 10.0 | 10.0 | 10.0 | | | | 80.00 | \$ 11.96 | 0.5229 | \$ 18.21 | \$ 1,457.13 | | |
| | | FT | OT | | | | | | | | | | | | | | | | | | | | | | | | | | \$ 17.94 | 0.2756 | \$ 22.88 | \$ - | | |
| Jones, Johnny | Road Equipment Operator | FT | REG | | | 10.0 | 10.0 | | | | | | | | | | | | | | | | | | | | | | 20.00 | \$ 10.30 | 0.5560 | \$ 16.03 | \$ 320.53 | |
| | | FT | OT | | | | | | | | | | | | | | | | | | | | | | | | | | \$ 15.45 | 0.2756 | \$ 19.71 | \$ - | | |
| Wolfe, Steven | Road Equipment Operator | FT | REG | | | | | | | | | | | | | | | | | | | | 10.0 | | | | | | | 10.00 | \$ 13.33 | 0.5018 | \$ 20.02 | \$ 200.20 |
| | | FT | OT | | | | | | | | | | | | | | | | | | | | | | | | | | | \$ 20.00 | 0.2756 | \$ 25.51 | \$ - | |
| Self, James | Field Supervisor | FT | REG | | 5.0 | | | | | | | 5.0 | | | | | | | | | | 5.0 | | | | | | | 15.00 | \$ 14.00 | 0.4930 | \$ 20.90 | \$ 313.54 | |
| | | FT | OT | | | | | | | | | | | | | | | | | | | | | | | | | | | \$ 21.00 | 0.2756 | \$ 26.79 | \$ - | |
| Harvey, David | Road Superintendent | E | REG | | 5.0 | | | | | | | 5.0 | | | | | | | | | | 5.0 | | | | | | | 15.00 | \$ 20.38 | 0.4382 | \$ 29.31 | \$ 439.66 | |
| | | E | OT | | | | | | | | | | | | | | | | | | | | | | | | | | | \$ - | 0.2756 | \$ - | \$ - | |
| Williamson, John | Mech Helper | FT | REG | | 5.0 | | | | | | | | | | | | | | | | | 5.0 | | | | | | | 10.00 | \$ 11.33 | 0.5343 | \$ 17.38 | \$ 173.84 | |
| | | FT | OT | | | | | | | | | | | | | | | | | | | | | | | | | | | \$ 17.00 | 0.2756 | \$ 21.68 | \$ - | |
| Tangway, James | Shop Leader | FT | REG | | 5.0 | | | | | | | 5.0 | | | | | | | | | | 5.0 | | | | | | | 15.00 | \$ 16.42 | 0.4672 | \$ 24.09 | \$ 361.38 | |
| | | FT | OT | | | | | | | | | | | | | | | | | | | | | | | | | | | \$ 24.63 | 0.2756 | \$ 31.42 | \$ - | |
| Name | | | REG | | | | | | | | | | | | | | | | | | | | | | | | | | | \$ - | | \$ - | \$ - | |
| Title | | | OT | | | | | | | | | | | | | | | | | | | | | | | | | | | \$ - | | \$ - | \$ - | |

| | | | |
|--------------------------|----------------|--------------------|----------------------|
| TOTAL HOURS | 345.00 | REG TIME SUBTOTAL | \$ 6,386.66 |
| GRAND TOTAL HOURS | 6610.00 | O/T SUBTOTAL | \$ - |
| EET REG HOURS | 345.00 | REG GRAND TOTAL | \$ 116,108.60 |
| HEET OT HOURS | | O/T GRAND TOTAL | \$ 4,462.95 |
| | | GRAND TOTAL | \$ 120,571.55 |

I certify that the above information was obtained from Payroll records, invoices, or other documents that are available for audit.

| | | |
|-----------|-------|------|
| CERTIFIED | TITLE | DATE |
|-----------|-------|------|

Revised Jan-07

FEDERAL EMERGENCY MANAGEMENT AGENCY
FORCE ACCOUNT LABOR RECORD

| | | | | | |
|-----------|-------------|----------|----------|------------|--|
| APPLICANT | PROJECT NO. | CATEGORY | FIPS NO. | DISASTER # | |
| Mine | | C | | FEMA | |

| Name | Title | STATUS | REG / OT | DATES & HOURS WORKED EACH WEEK | | | | | | | | | | | | | | | | | | IS THIS A PILOT PROGRAM PW? | | | | | | | |
|------------------|-------------------------|--------|----------|--------------------------------|-------------|--------------|--------------|------------|------|------|------|------|------|------|------|------|------|------|------|------|------|-----------------------------|------|------|---------------|----------|--------|----------|-------------|
| | | | | 7/11 | 7/12 | 7/13 | 7/14 | 7/15 | 7/16 | 7/17 | 7/18 | 7/19 | 7/20 | 7/21 | 7/22 | 7/23 | 7/24 | 7/25 | 7/26 | 7/27 | 7/28 | 7/29 | 7/30 | 7/31 | RATES / COSTS | | | | |
| | | | | TOTAL HRS | HOURLY RATE | BENEFIT RATE | TOTAL HOURLY | TOTAL COST | | | | | | | | | | | | | | | | | | | | | |
| Ramsey, Bill | Equip oper 3 | FT | REG | | 10.0 | 10.0 | 10.0 | 10.0 | | | | 10.0 | 10.0 | 10.0 | 10.0 | | | | 10.0 | 10.0 | 10.0 | | | | 110.00 | \$ 11.00 | 0.5408 | \$ 16.95 | \$ 1,864.38 |
| Frazier, Mack | Road Equipment Operator | FT | REG | | 10.0 | 10.0 | 10.0 | 10.0 | | | | 10.0 | 10.0 | 10.0 | | | | 10.0 | 10.0 | 10.0 | 10.0 | | | | 110.00 | \$ 10.23 | 0.5576 | \$ 15.93 | \$ 1,752.75 |
| Adams, Eric | Road Team Leader | FT | REG | | | 10.0 | 10.0 | | | | | 10.0 | 10.0 | 10.0 | | | | 10.0 | | 10.0 | 10.0 | | | | 80.00 | \$ 11.99 | 0.5224 | \$ 18.25 | \$ 1,460.29 |
| Gohlke, Henry | Safety Supervisor | FT | REG | | 10.0 | | | | | | | 10.0 | | | | | | | | 10.0 | | | | | 30.00 | \$ 13.97 | 0.4934 | \$ 20.86 | \$ 625.89 |
| Schmigel, Joanne | Road Equipment Operator | FT | REG | | 10.0 | 10.0 | 10.0 | 10.0 | | | | | 10.0 | 10.0 | 10.0 | | | | | | | 10.0 | | | 80.00 | \$ 11.96 | 0.5229 | \$ 18.21 | \$ 1,457.13 |
| Jones, Johnny | Road Equipment Operator | FT | REG | | | | | 10.0 | | | | 10.0 | | | | | | | | | 10.0 | 10.0 | | | 40.00 | \$ 10.30 | 0.5560 | \$ 16.03 | \$ 641.05 |
| Wolfe, Steven | Road Equipment Operator | FT | REG | | | 10.0 | 10.0 | 15.0 | | | | 10.0 | 10.0 | 10.0 | 10.0 | | | | 10.0 | 10.0 | | | | | 95.00 | \$ 13.33 | 0.5018 | \$ 20.02 | \$ 1,901.87 |
| Self, James | Field Supervisor | FT | REG | | 5.0 | | | | | | | 5.0 | | | | | | | 5.0 | | | | | | 15.00 | \$ 14.00 | 0.4930 | \$ 20.90 | \$ 313.54 |
| Harvey, David | Road Superintendent | E | REG | | 5.0 | | | | | | | 5.0 | | | | | | | 5.0 | | | | | | 15.00 | \$ 20.38 | 0.4382 | \$ 29.31 | \$ 439.66 |
| Williamson, John | Mech Helper | FT | REG | | | | | | | | | 5.0 | | | | | | | | | | | | | 5.00 | \$ 11.33 | 0.5343 | \$ 17.38 | \$ 86.92 |
| Tangway, James | Shop Leader | FT | REG | | 5.0 | | | | | | | 5.0 | | | | | | | | | | | | | 10.00 | \$ 16.42 | 0.4672 | \$ 24.09 | \$ 240.92 |
| | | | REG | | | | | | | | | | | | | | | | | | | | | | | \$ - | | \$ - | \$ - |
| | | | OT | | | | | | | | | | | | | | | | | | | | | | | \$ - | | \$ - | \$ - |

| | | | |
|--------------------------|----------------|--------------------|----------------------|
| TOTAL HOURS | 590.00 | REG TIME SUBTOTAL | \$ 10,784.41 |
| GRAND TOTAL HOURS | 6610.00 | O/T SUBTOTAL | \$ - |
| EET REG HOURS | 590.00 | REG GRAND TOTAL | \$ 116,108.60 |
| HEET OT HOURS | | O/T GRAND TOTAL | \$ 4,462.95 |
| | | GRAND TOTAL | \$ 120,571.55 |

I certify that the above information was obtained from Payroll records, invoices, or other documents that are available for audit.

| | | |
|-----------|-------|------|
| CERTIFIED | TITLE | DATE |
|-----------|-------|------|

Revised Jan-07

FEDERAL EMERGENCY MANAGEMENT AGENCY
FORCE ACCOUNT LABOR RECORD

| | | | | | | | |
|-----------|-------------|----------|----------|------------|--|--|--|
| APPLICANT | PROJECT NO. | CATEGORY | FIPS NO. | DISASTER # | | | |
| Mine | | C | | FEMA | | | |

| Name | Title | STATUS | REG / OT | DATES & HOURS WORKED EACH WEEK | | | | | | | | | | | | | | | | | | IS THIS A PILOT PROGRAM PW? | | | | | | | |
|------------------|-------------------------|--------|----------|--------------------------------|-------------|--------------|--------------|------------|-----|-----|-----|------|------|------|------|------|------|------|------|------|------|-----------------------------|------|------|---------------|----------|--------|----------|-------------|
| | | | | 8/1 | 8/2 | 8/3 | 8/4 | 8/5 | 8/6 | 8/7 | 8/8 | 8/9 | 8/10 | 8/11 | 8/12 | 8/13 | 8/14 | 8/15 | 8/16 | 8/17 | 8/18 | 8/19 | 8/20 | 8/21 | RATES / COSTS | | | | |
| | | | | TOTAL HRS | HOURLY RATE | BENEFIT RATE | TOTAL HOURLY | TOTAL COST | | | | | | | | | | | | | | | | | | | | | |
| Ramsey, Bill | Equip oper 3 | FT | REG | | 10.0 | 10.0 | 10.0 | 10.0 | | | | 10.0 | 10.0 | 10.0 | 10.0 | | | | | | | | | | 80.00 | \$ 11.00 | 0.5408 | \$ 16.95 | \$ 1,355.91 |
| | | FT | OT | | | | | | | | | | | | | | | | | | | | | | | \$ 16.50 | 0.2756 | \$ 21.05 | \$ - |
| Frazier, Mack | Road Equipment Operator | FT | REG | | 10.0 | 10.0 | | | | | | 10.0 | 10.0 | 10.0 | | | | | | 10.0 | | 10.0 | | | 70.00 | \$ 10.23 | 0.5576 | \$ 15.93 | \$ 1,115.39 |
| | | FT | OT | | | | | | | | | | | | | | | | | | | | | | | \$ 15.35 | 0.2756 | \$ 19.57 | \$ - |
| Adams, Eric | Road Team Leader | FT | REG | | 10.0 | | | | | | | | | | | | | | | 10.0 | | 10.0 | | | 30.00 | \$ 11.99 | 0.5224 | \$ 18.25 | \$ 547.61 |
| | | FT | OT | | | | | | | | | | | | | | | | | | | | | | | \$ 17.99 | 0.2756 | \$ 22.94 | \$ - |
| Gohlke, Henry | Safety Supervisor | FT | REG | | 10.0 | | | | | | | 10.0 | | | | | | | | | | | | | 30.00 | \$ 13.97 | 0.4934 | \$ 20.86 | \$ 625.89 |
| | | FT | OT | | | | | | | | | | | | | | | | | | | | | | | \$ 20.96 | 0.2756 | \$ 26.73 | \$ - |
| Schmigel, Joanne | Road Equipment Operator | FT | REG | | 10.0 | | | 10.0 | | | | 10.0 | 10.0 | 10.0 | 10.0 | | | | | | 10.0 | 10.0 | 10.0 | 10.0 | 100.00 | \$ 11.96 | 0.5229 | \$ 18.21 | \$ 1,821.41 |
| | | FT | OT | | | | | | | | | | | | | | | | | | | | | | | \$ 17.94 | 0.2756 | \$ 22.88 | \$ - |
| Jones, Johnny | Road Equipment Operator | FT | REG | | 10.0 | 10.0 | 10.0 | 10.0 | | | | 10.0 | 10.0 | 10.0 | 10.0 | | | | | | 10.0 | 10.0 | 10.0 | 10.0 | 120.00 | \$ 10.30 | 0.5560 | \$ 16.03 | \$ 1,923.16 |
| | | FT | OT | | | | | | | | | | | | | | | | | | | | | | | \$ 15.45 | 0.2756 | \$ 19.71 | \$ - |
| Wolfe, Steven | Road Equipment Operator | FT | REG | | 10.0 | 10.0 | 10.0 | 10.0 | | | | 10.0 | 10.0 | | 10.0 | | | | | | | | | | 70.00 | \$ 13.33 | 0.5018 | \$ 20.02 | \$ 1,401.37 |
| | | FT | OT | | | | | | | | | | | | | | | | | | | | | | | \$ 20.00 | 0.2756 | \$ 25.51 | \$ - |
| Self, James | Field Supervisor | FT | REG | | 5.0 | | | | | | | 5.0 | | | | | | | | | | | | | 15.00 | \$ 14.00 | 0.4930 | \$ 20.90 | \$ 313.54 |
| | | FT | OT | | | | | | | | | | | | | | | | | | | | | | | \$ 21.00 | 0.2756 | \$ 26.79 | \$ - |
| Harvey, David | Road Superintendent | E | REG | | 5.0 | | | | | | | 5.0 | | | | | | | | | | | | | 15.00 | \$ 20.38 | 0.4382 | \$ 29.31 | \$ 439.66 |
| | | E | OT | | | | | | | | | | | | | | | | | | | | | | | \$ - | 0.2756 | \$ - | \$ - |
| Williamson, John | Mech Helper | FT | REG | | 5.0 | | | | | | | 5.0 | | | | | | | | | | | | | 10.00 | \$ 11.33 | 0.5343 | \$ 17.38 | \$ 173.84 |
| | | FT | OT | | | | | | | | | | | | | | | | | | | | | | | \$ 17.00 | 0.2756 | \$ 21.68 | \$ - |
| Tangway, James | Shop Leader | FT | REG | | 5.0 | | | | | | | 5.0 | | | | | | | | | | | | | 10.00 | \$ 16.42 | 0.4672 | \$ 24.09 | \$ 240.92 |
| | | FT | OT | | | | | | | | | | | | | | | | | | | | | | | \$ 24.63 | 0.2756 | \$ 31.42 | \$ - |
| Name | | | REG | | | | | | | | | | | | | | | | | | | | | | | \$ - | | \$ - | \$ - |
| Title | | | OT | | | | | | | | | | | | | | | | | | | | | | | \$ - | | \$ - | \$ - |

| | | | |
|--------------------------|----------------|--------------------|----------------------|
| TOTAL HOURS | 550.00 | REG TIME SUBTOTAL | \$ 9,958.71 |
| GRAND TOTAL HOURS | 6610.00 | O/T SUBTOTAL | \$ - |
| EET REG HOURS | 550.00 | REG GRAND TOTAL | \$ 116,108.60 |
| HEET OT HOURS | | O/T GRAND TOTAL | \$ 4,462.95 |
| | | GRAND TOTAL | \$ 120,571.55 |

I certify that the above information was obtained from Payroll records, invoices, or other documents that are available for audit.

| | | |
|-----------|-------|------|
| CERTIFIED | TITLE | DATE |
|-----------|-------|------|

FEDERAL EMERGENCY MANAGEMENT AGENCY
FORCE ACCOUNT LABOR RECORD

| | | | | | | | | |
|-----------|--|-------------|----------|----------|------------|--|--|--|
| APPLICANT | | PROJECT NO. | CATEGORY | FIPS NO. | DISASTER # | | | |
| Mine | | | C | | FEMA | | | |

| Name | Title | STATUS | REG / OT | DATES & HOURS WORKED EACH WEEK | | | | | | | | | | | | | | | | | | IS THIS A PILOT PROGRAM PW? | | | | | | | |
|------------------|-------------------------|--------|----------|--------------------------------|--------------|------|------|------|------|------|------|------|------|------|------|-----|------|------|------|------|------|-----------------------------|----------|----------|-----------|-------------|--------------|--------------|------------|
| | | | | 8/22 | 8/23 | 8/24 | 8/25 | 8/26 | 8/27 | 8/28 | 8/29 | 8/30 | 8/31 | 9/1 | 9/2 | 9/3 | 9/4 | 9/5 | 9/6 | 9/7 | 9/8 | 9/9 | 9/10 | 9/11 | TOTAL HRS | HOURLY RATE | BENEFIT RATE | TOTAL HOURLY | TOTAL COST |
| | | | | Ramsey, Bill | Equip oper 3 | FT | REG | | | 10.0 | | | | | | | | | | | | 10.0 | | | | | 20.00 | \$ 11.00 | 0.5408 |
| Frazier, Mack | Road Equipment Operator | FT | REG | 10.0 | 10.0 | | | | | | | | | 10.0 | 10.0 | | | | 10.0 | 10.0 | 10.0 | | 70.00 | \$ 10.23 | 0.5576 | \$ 15.93 | \$ 1,115.39 | | |
| Adams, Eric | Road Team Leader | FT | REG | 10.0 | 10.0 | | | | | | | 10.0 | 10.0 | | | | | 10.0 | 10.0 | 10.0 | | 70.00 | \$ 11.99 | 0.5224 | \$ 18.25 | \$ 1,277.75 | | | |
| Gohlke, Henry | Safety Supervisor | FT | REG | 10.0 | | | | | | | 10.0 | | | | | | 10.0 | | | | | 30.00 | \$ 13.97 | 0.4934 | \$ 20.86 | \$ 625.89 | | | |
| Schmigel, Joanne | Road Equipment Operator | FT | REG | 10.0 | 10.0 | | | | | | 10.0 | 10.0 | 10.0 | 10.0 | | | | 10.0 | 10.0 | 10.0 | | 90.00 | \$ 11.96 | 0.5229 | \$ 18.21 | \$ 1,639.27 | | | |
| Jones, Johnny | Road Equipment Operator | FT | REG | 10.0 | 10.0 | | | | | | 10.0 | 10.0 | 10.0 | 10.0 | | | | 10.0 | 10.0 | | | 80.00 | \$ 10.30 | 0.5560 | \$ 16.03 | \$ 1,282.11 | | | |
| Wolfe, Steven | Road Equipment Operator | FT | REG | | | | | | | | | | | | | | | | | | | | \$ 13.33 | 0.5018 | \$ 20.02 | \$ - | | | |
| Self, James | Field Supervisor | FT | REG | 5.0 | | | | | | | 5.0 | | | | | | 5.0 | | | | | 15.00 | \$ 14.00 | 0.4930 | \$ 20.90 | \$ 313.54 | | | |
| Harvey, David | Road Superintendent | E | REG | 5.0 | | | | | | | 5.0 | | | | | | 5.0 | | | | | 15.00 | \$ 20.38 | 0.4382 | \$ 29.31 | \$ 439.66 | | | |
| Williamson, John | Mech Helper | FT | REG | 5.0 | | | | | | | 5.0 | | | | | | | | | | | 10.00 | \$ 11.33 | 0.5343 | \$ 17.38 | \$ 173.84 | | | |
| Tangway, James | Shop Leader | FT | REG | 5.0 | | | | | | | 5.0 | | | | | | 5.0 | | | | | 15.00 | \$ 16.42 | 0.4672 | \$ 24.09 | \$ 361.38 | | | |
| | | | REG | | | | | | | | | | | | | | | | | | | | \$ - | | \$ - | \$ - | | | |
| | | | OT | | | | | | | | | | | | | | | | | | | | \$ - | | \$ - | \$ - | | | |

| | | | |
|--------------------------|----------------|--------------------|----------------------|
| TOTAL HOURS | 415.00 | REG TIME SUBTOTAL | \$ 7,567.81 |
| GRAND TOTAL HOURS | 6610.00 | O/T SUBTOTAL | \$ - |
| EET REG HOURS | 415.00 | REG GRAND TOTAL | \$ 116,108.60 |
| HEET OT HOURS | | O/T GRAND TOTAL | \$ 4,462.95 |
| | | GRAND TOTAL | \$ 120,571.55 |

I certify that the above information was obtained from Payroll records, invoices, or other documents that are available for audit.

| | | |
|-----------|-------|------|
| CERTIFIED | TITLE | DATE |
|-----------|-------|------|

Revised Jan-07

FEDERAL EMERGENCY MANAGEMENT AGENCY
FORCE ACCOUNT LABOR RECORD

| | | | | | | | | |
|-----------|--|-------------|----------|----------|------------|--|--|--|
| APPLICANT | | PROJECT NO. | CATEGORY | FIPS NO. | DISASTER # | | | |
| Mine | | | C | | FEMA | | | |

| Name | Title | STATUS | REG / OT | DATES & HOURS WORKED EACH WEEK | | | | | | | | | | | | | | | | | | | IS THIS A PILOT PROGRAM PW? | | | | | | | | | |
|-------------------|-------------------------|--------|----------|--------------------------------|-------------|--------------|--------------|------------|------|------|-------|-------|-------|-------|-------|-------|-------|-------|-------|-------|-------|-------|-----------------------------|----------|---------------|----------|-------------|--|--|--|--|--|
| | | | | 10/3 | 10/4 | 10/5 | 10/6 | 10/7 | 10/8 | 10/9 | 10/10 | 10/11 | 10/12 | 10/13 | 10/14 | 10/15 | 10/16 | 10/17 | 10/18 | 10/19 | 10/20 | 10/21 | 10/22 | 10/23 | RATES / COSTS | | | | | | | |
| | | | | TOTAL HRS | HOURLY RATE | BENEFIT RATE | TOTAL HOURLY | TOTAL COST | | | | | | | | | | | | | | | | | | | | | | | | |
| Ramsey, Williliam | Road Equipment Operator | FT | REG | | 10.0 | 10.0 | 10.0 | 10.0 | | | | 10.0 | | | | | | 10.0 | 10.0 | | | | 80.00 | \$ 11.00 | 0.5408 | \$ 16.95 | \$ 1,355.91 | | | | | |
| | | FT | OT | | | | | | | | | | | | | | | | | | | | | \$ 16.50 | 0.2756 | \$ 21.05 | \$ - | | | | | |
| Frazier, Mack | Road Equipment Operator | FT | REG | | 10.0 | 10.0 | 10.0 | | | | | 10.0 | | | | | 10.0 | 10.0 | 10.0 | 10.0 | | | 90.00 | \$ 10.23 | 0.5576 | \$ 15.93 | \$ 1,434.07 | | | | | |
| | | FT | OT | | | | | | | | | | | | | | | | | | | | | \$ 15.35 | 0.2756 | \$ 19.57 | \$ - | | | | | |
| Adams, Eric | Road Team Leader | FT | REG | | 10.0 | 10.0 | 10.0 | 10.0 | | | | 10.0 | | | | | 10.0 | 10.0 | 10.0 | 10.0 | | | 100.00 | \$ 11.99 | 0.5224 | \$ 18.25 | \$ 1,825.36 | | | | | |
| | | FT | OT | | | | | | | | | | | | | | | | | | | | | \$ 17.99 | 0.2756 | \$ 22.94 | \$ - | | | | | |
| Gohlke, Henry | Safety Supervisor | FT | REG | | 10.0 | | | | | | | 10.0 | | | | | | | 10.0 | | | | 30.00 | \$ 13.97 | 0.4934 | \$ 20.86 | \$ 625.89 | | | | | |
| | | FT | OT | | | | | | | | | | | | | | | | | | | | | \$ 20.96 | 0.2756 | \$ 26.73 | \$ - | | | | | |
| Schmigel, Joanne | Road Equipment Operator | FT | REG | | 10.0 | 10.0 | 10.0 | 10.0 | | | | 10.0 | 10.0 | 10.0 | | | | 10.0 | 10.0 | 10.0 | | | 110.00 | \$ 11.96 | 0.5229 | \$ 18.21 | \$ 2,003.55 | | | | | |
| | | FT | OT | | | | | | | | | | | | | | | | | | | | | \$ 17.94 | 0.2756 | \$ 22.88 | \$ - | | | | | |
| Jones, Johnny | Road Equipment Operator | FT | REG | | | 10.0 | 10.0 | 10.0 | | | | 10.0 | 10.0 | | | | | 10.0 | 10.0 | 10.0 | 10.0 | | 90.00 | \$ 10.30 | 0.5560 | \$ 16.03 | \$ 1,442.37 | | | | | |
| | | FT | OT | | | | | | | | | | | | | | | | | | | | | \$ 15.45 | 0.2756 | \$ 19.71 | \$ - | | | | | |
| Wolfe, Steven | Road Equipment Operator | FT | REG | | | | | | | | | | | | | | | | | | | | | \$ 13.33 | 0.5018 | \$ 20.02 | \$ - | | | | | |
| | | FT | OT | | | | | | | | | | | | | | | | | | | | | \$ 20.00 | 0.2756 | \$ 25.51 | \$ - | | | | | |
| Self, James | Field Supervisor | FT | REG | | 5.0 | | | | | | | 5.0 | | | | | | | 5.0 | | | | 15.00 | \$ 14.00 | 0.4930 | \$ 20.90 | \$ 313.54 | | | | | |
| | | FT | OT | | | | | | | | | | | | | | | | | | | | | \$ 21.00 | 0.2756 | \$ 26.79 | \$ - | | | | | |
| Harvey, David | Road Superintendent | E | REG | | 5.0 | | | | | | | 5.0 | | | | | | | 5.0 | | | | 15.00 | \$ 20.38 | 0.4382 | \$ 29.31 | \$ 439.66 | | | | | |
| | | E | OT | | | | | | | | | | | | | | | | | | | | | \$ - | 0.2756 | \$ - | \$ - | | | | | |
| Williamson, John | Mech Helper | FT | REG | | 5.0 | | | | | | | 5.0 | | | | | | | 5.0 | | | | 15.00 | \$ 11.33 | 0.5343 | \$ 17.38 | \$ 260.76 | | | | | |
| | | FT | OT | | | | | | | | | | | | | | | | | | | | | \$ 17.00 | 0.2756 | \$ 21.68 | \$ - | | | | | |
| Tangway, James | Shop Leader | FT | REG | | 5.0 | | | | | | | 5.0 | | | | | | | 5.0 | | | | 15.00 | \$ 16.42 | 0.4672 | \$ 24.09 | \$ 361.38 | | | | | |
| | | FT | OT | | | | | | | | | | | | | | | | | | | | | \$ 24.63 | 0.2756 | \$ 31.42 | \$ - | | | | | |
| | | | REG | | | | | | | | | | | | | | | | | | | | | \$ - | | \$ - | \$ - | | | | | |
| | | | OT | | | | | | | | | | | | | | | | | | | | | \$ - | | \$ - | \$ - | | | | | |

| | | | | | | | | | | | | | | | | | | | | | | | | |
|--------------------------|--|--|--|--|--|--|--|--|--|--|--|--|--|--|--|--|--|--|----------------|--------------------|--|--|--|----------------------|
| TOTAL HOURS | | | | | | | | | | | | | | | | | | | 560.00 | REG TIME SUBTOTAL | | | | \$ 10,062.50 |
| GRAND TOTAL HOURS | | | | | | | | | | | | | | | | | | | 6610.00 | O/T SUBTOTAL | | | | \$ - |
| EET REG HOURS | | | | | | | | | | | | | | | | | | | 560.00 | REG GRAND TOTAL | | | | \$ 116,108.60 |
| HEET OT HOURS | | | | | | | | | | | | | | | | | | | | O/T GRAND TOTAL | | | | \$ 4,462.95 |
| | | | | | | | | | | | | | | | | | | | | GRAND TOTAL | | | | \$ 120,571.55 |

I certify that the above information was obtained from Payroll records, invoices, or other documents that are available for audit.

| | | |
|-----------|-------|------|
| CERTIFIED | TITLE | DATE |
|-----------|-------|------|

FEDERAL EMERGENCY MANAGEMENT AGENCY
FORCE ACCOUNT LABOR RECORD

| | | | | | |
|-----------|-------------|----------|----------|------------|--|
| APPLICANT | PROJECT NO. | CATEGORY | FIPS NO. | DISASTER # | |
| Mine | | C | | FEMA | |

| Name | Title | STATUS | REG / OT | DATES & HOURS WORKED EACH WEEK | | | | | | | | | | | | | | IS THIS A PILOT PROGRAM PW? | | | | | | | | | | | |
|------------------|-------------------------|--------|----------|--------------------------------|-------|-------|-------|-------|-------|-------|-------|-------|-------|-------|-------|-------|-------|-----------------------------|-------|-------|------|--------------------------|----------------|----------------------|-----------|-------------|--------------|---------------|------------|
| | | | | 11/14 | 11/15 | 11/16 | 11/17 | 11/18 | 11/19 | 11/20 | 11/21 | 11/22 | 11/23 | 11/24 | 11/25 | 11/26 | 11/27 | 11/28 | 11/29 | 11/30 | 12/1 | 12/2 | 12/3 | 12/4 | TOTAL HRS | HOURLY RATE | BENEFIT RATE | TOTAL HOURLY | TOTAL COST |
| | | | | | | | | | | | | | | | | | | | | | | | | | | | | | |
| Ramsey, William | Road Equipment Operator | FT | REG | | 10.0 | | | | | | | | | | | | | | | | | | | 10.00 | \$ 11.00 | 0.5408 | \$ 16.95 | \$ 169.49 | |
| | | FT | OT | | | | | | | | | | | | | | | | | | | | | | | \$ 16.50 | 0.2756 | \$ 21.05 | \$ - |
| Frazier, Mack | Road Equipment Operator | FT | REG | | 10.0 | | | | | | | | | | | | | | | | | | | 10.00 | \$ 10.23 | 0.5576 | \$ 15.93 | \$ 159.34 | |
| | | FT | OT | | | | | | | | | | | | | | | | | | | | | | | \$ 15.35 | 0.2756 | \$ 19.57 | \$ - |
| Adams, Eric | Road Team Leader | FT | REG | | 10.0 | | | | | | | | | | | | | | | 10.0 | | | | 20.00 | \$ 11.99 | 0.5224 | \$ 18.25 | \$ 365.07 | |
| | | FT | OT | | | | | | | | | | | | | | | | | | | | | | | \$ 17.99 | 0.2756 | \$ 22.94 | \$ - |
| Gohlke, Henry | Safety Supervisor | FT | REG | | 10.0 | | | | | 10.0 | | | | | | | | | | 3.0 | | | | 23.00 | \$ 13.97 | 0.4934 | \$ 20.86 | \$ 479.85 | |
| | | FT | OT | | | | | | | | | | | | | | | | | | | | | | | \$ 20.96 | 0.2756 | \$ 26.73 | \$ - |
| Schmigel, Joanne | Road Equipment Operator | FT | REG | | 10.0 | | | | | | | | | | | | | | | 10.0 | | | | 20.00 | \$ 11.96 | 0.5229 | \$ 18.21 | \$ 364.28 | |
| | | FT | OT | | | | | | | | | | | | | | | | | | | | | | | \$ 17.94 | 0.2756 | \$ 22.88 | \$ - |
| Wolfe, Steven | Road Equipment Operator | FT | REG | | | | | | | | | | | | | | | | | | | | | | | \$ 13.33 | 0.5018 | \$ 20.02 | \$ - |
| | | FT | OT | | | | | | | | | | | | | | | | | | | | | | | \$ 20.00 | 0.2756 | \$ 25.51 | \$ - |
| Self, James | Field Supervisor | FT | REG | | 5.0 | | | | | | | | | | | | | | | 3.0 | | | | 8.00 | \$ 14.00 | 0.4930 | \$ 20.90 | \$ 167.22 | |
| | | FT | OT | | | | | | | | | | | | | | | | | | | | | | | \$ 21.00 | 0.2756 | \$ 26.79 | \$ - |
| Harvey, David | Road Superintendent | E | REG | | 5.0 | | | | | | | | | | | | | | | 4.0 | | | | 9.00 | \$ 20.38 | 0.4382 | \$ 29.31 | \$ 263.80 | |
| | | E | OT | | | | | | | | | | | | | | | | | | | | | | | \$ - | 0.2756 | \$ - | \$ - |
| Williamson, John | Mech Helper | FT | REG | | 5.0 | | | | | | | | | | | | | | | 4.0 | | | | 9.00 | \$ 11.33 | 0.5343 | \$ 17.38 | \$ 156.45 | |
| | | FT | OT | | | | | | | | | | | | | | | | | | | | | | | \$ 17.00 | 0.2756 | \$ 21.68 | \$ - |
| Tangway, James | Shop Leader | FT | REG | | 5.0 | | | | | | | | | | | | | | | 4.0 | | | | 9.00 | \$ 16.42 | 0.4672 | \$ 24.09 | \$ 216.83 | |
| | | FT | OT | | | | | | | | | | | | | | | | | | | | | | | \$ 24.63 | 0.2756 | \$ 31.42 | \$ - |
| Jones, Johnny | Road Equipment Operator | FT | REG | | | | | | | | | | | | | | | | | 10.0 | | | | 10.00 | \$ 10.30 | 0.5560 | \$ 16.03 | \$ 160.26 | |
| | | FT | OT | | | | | | | | | | | | | | | | | | | | | | | \$ 15.45 | 0.2756 | \$ 19.71 | \$ - |
| Benson, Willie | Road Equipment Operator | FT | REG | | | | | | | | | | | | | | | | | | | | | | | \$ 10.00 | 0.5631 | \$ 15.63 | \$ - |
| | | FT | OT | | | | | | | | | | | | | | | | | | | | | | | \$ 15.00 | 0.2756 | \$ 19.13 | \$ - |
| | | | | | | | | | | | | | | | | | | | | | | TOTAL HOURS | 128.00 | REG TIME SUBTOTAL | | | | \$ 2,502.60 | |
| | | | | | | | | | | | | | | | | | | | | | | GRAND TOTAL HOURS | 6610.00 | O/T SUBTOTAL | | | | \$ - | |
| | | | | | | | | | | | | | | | | | | | | | | EET REG HOURS | 128.00 | REG GRAND TOTAL | | | | \$ 116,108.60 | |
| | | | | | | | | | | | | | | | | | | | | | | HEET OT HOURS | | O/T GRAND TOTAL | | | | \$ 4,462.95 | |
| | | | | | | | | | | | | | | | | | | | | | | GRAND TOTAL | | \$ 120,571.55 | | | | | |

I certify that the above information was obtained from Payroll records, invoices, or other documents that are available for audit.

| | | |
|-----------|-------|------|
| CERTIFIED | TITLE | DATE |
|-----------|-------|------|

Revised Jan-07

Equipment Costs

FORCE ACCOUNT EQUIPMENT RECORD

| | | | | | | | |
|-----------|-------------|----------|----------|------------|--|--|--|
| APPLICANT | PROJECT NO. | CATEGORY | FIPS NO. | DISASTER # | | | |
| Mine | | C | | FEMA | | | |

| TYPE OF EQUIPMENT | | | | DATES/HOURS USED EACH DAY | | | | | | | | | | | | | | | | | TOTAL HRS | EQUIP RATE | TOTAL COST | | | | | | | |
|--|-----|----------|---------------|---------------------------|-------|------|------|------|------|-----|-----|-----|-----|------|-----|-----|-----|-----|------|------|-----------|------------|------------|------|------|------|--|----------|-----------|-------------|
| Indicate size, capacity, horsepower, make, model, etc. | HP | CAPACITY | EQUIP. CODE # | OPERATOR'S NAME | | 3/28 | 3/29 | 3/30 | 3/31 | 4/1 | 4/2 | 4/3 | 4/4 | 4/5 | 4/6 | 4/7 | 4/8 | 4/9 | 4/10 | 4/11 | 4/12 | 4/13 | 4/14 | 4/15 | 4/16 | 4/17 | | | | |
| Truck, Pickup (50) | 250 | 3/4 ton | 8801 | Harvey, David | Hrs | | | | | | | | | 1.5 | | | | | | | 1.5 | | | | | | | 3.00 | \$ 14.00 | \$ 42.00 |
| Truck, Pickup (51) | 250 | | 8801 | Self, James | Hrs | | | | | | | | | 1.5 | | | | | | | 1.5 | | | | | | | 3.00 | \$ 14.00 | \$ 42.00 |
| Truck, Pickup (1) | | | 8801 | Gohlke, Henry | Hrs | | | | | | | | | 1.5 | | | | | | | 1.5 | | | | | | | 3.00 | \$ 14.00 | \$ 42.00 |
| | | | | | Hrs | | | | | | | | | | | | | | | | | | | | | | | \$ - | \$ - | |
| | | | | | Hrs | | | | | | | | | | | | | | | | | | | | | | | \$ - | \$ - | |
| Truck, Pickup, (23)2 | 250 | 3/4 Ton | 8801 | Adams, Eric | Hrs | | | | | | | | | 1.5 | 1.5 | 1.5 | 1.5 | | | | 1.5 | 1.5 | 1.5 | 1.5 | | | | 12.01 | \$ 14.00 | \$ 168.14 |
| Truck, Pickup, (12) | | 1/2 Ton | 8801 | Ramsey | Hrs | | | | | | | | | 1.5 | 1.5 | 1.5 | 1.5 | | | | 1.5 | 1.5 | 1.5 | 1.5 | | | | 12.00 | \$ 14.00 | \$ 168.00 |
| Truck, Service (28) | | | 8801 | Tangway | Hrs | | | | | | | | | 1.5 | 1.5 | | 1.5 | | | | 1.5 | | | | | | | 6.00 | \$ 14.00 | \$ 84.00 |
| Truck, Dump (24) | | 24 Yard | 8724 | jones Johnny | Hrs | | | | | | | | | 10.0 | | 3.0 | 3.0 | | | | 4.0 | | | | 5.0 | | | 25.00 | \$ 105.00 | \$ 2,625.00 |
| Truck, Pickup, (22) | 300 | 3/4 Ton | 8801 | David Williams | Hrs | | | | | | | | | | | | | | | | | | | | | | | \$ 14.00 | \$ - | |
| Crusher* | | | 8479 | | Hrs | | | | | | | | | 7.0 | 7.0 | 7.0 | 7.0 | | | | 7.0 | 7.0 | 7.0 | 7.0 | | | | 56.00 | \$ 36.00 | \$ 2,016.00 |
| Shaker * | | | 8250 | | Hrs | | | | | | | | | 7.0 | 7.0 | 7.0 | 7.0 | | | | 7.0 | 7.0 | 7.0 | 7.0 | | | | 56.00 | \$ 31.00 | \$ 1,736.00 |
| Dozer* | | | 8251 | | Hrs | | | | | | | | | 3.0 | 3.0 | 3.0 | 3.0 | | | | 3.0 | 3.0 | 3.0 | 3.0 | | | | 24.00 | \$ 40.00 | \$ 960.00 |
| Loader | | | 8392 | | Hrs | | | | | | | | | 3.0 | 3.0 | 3.0 | 3.0 | | | | 3.0 | 3.0 | 3.0 | 3.0 | | | | 24.00 | \$ 28.75 | \$ 690.00 |
| | | | | | Hrs | | | | | | | | | | | | | | | | | | | | | | | \$ - | \$ - | |
| | | | | | Hrs | | | | | | | | | | | | | | | | | | | | | | | | \$ - | \$ - |
| | | | | | Hrs | | | | | | | | | | | | | | | | | | | | | | | | \$ - | \$ - |
| | | | | | Hrs | | | | | | | | | | | | | | | | | | | | | | | | \$ - | \$ - |
| | | | | | Hrs | | | | | | | | | | | | | | | | | | | | | | | | \$ - | \$ - |
| | | | | | Hrs | | | | | | | | | | | | | | | | | | | | | | | | \$ - | \$ - |
| | | | | | Hrs | | | | | | | | | | | | | | | | | | | | | | | | \$ - | \$ - |
| | | | | | Hrs | | | | | | | | | | | | | | | | | | | | | | | | \$ - | \$ - |
| | | | | | Hrs | | | | | | | | | | | | | | | | | | | | | | | | \$ - | \$ - |
| | | | | | Hrs | | | | | | | | | | | | | | | | | | | | | | | | \$ - | \$ - |
| | | | | | Hrs | | | | | | | | | | | | | | | | | | | | | | | | \$ - | \$ - |
| | | | | | Hrs | | | | | | | | | | | | | | | | | | | | | | | | \$ - | \$ - |
| | | | | | Hrs | | | | | | | | | | | | | | | | | | | | | | | | \$ - | \$ - |
| | | | | | Hrs | | | | | | | | | | | | | | | | | | | | | | | | \$ - | \$ - |
| | | | | | Hrs | | | | | | | | | | | | | | | | | | | | | | | | \$ - | \$ - |
| | | | | | Hrs | | | | | | | | | | | | | | | | | | | | | | | | \$ - | \$ - |
| | | | | | Hrs | | | | | | | | | | | | | | | | | | | | | | | | \$ - | \$ - |
| | | | | | Hrs | | | | | | | | | | | | | | | | | | | | | | | | \$ - | \$ - |
| | | | | | Hrs | | | | | | | | | | | | | | | | | | | | | | | | \$ - | \$ - |
| | | | | | Hrs | | | | | | | | | | | | | | | | | | | | | | | | \$ - | \$ - |
| | | | | | Hrs | | | | | | | | | | | | | | | | | | | | | | | | \$ - | \$ - |
| | | | | | Hrs | | | | | | | | | | | | | | | | | | | | | | | | \$ - | \$ - |
| | | | | | Hrs | | | | | | | | | | | | | | | | | | | | | | | | \$ - | \$ - |
| | | | | | Hrs | | | | | | | | | | | | | | | | | | | | | | | | \$ - | \$ - |
| | | | | | Hrs | | | | | | | | | | | | | | | | | | | | | | | | \$ - | \$ - |
| | | | | | Hrs | | | | | | | | | | | | | | | | | | | | | | | | \$ - | \$ - |
| | | | | | Hrs | | | | | | | | | | | | | | | | | | | | | | | | \$ - | \$ - |
| | | | | | Hrs | | | | | | | | | | | | | | | | | | | | | | | | \$ - | \$ - |
| | | | | | Hrs | | | | | | | | | | | | | | | | | | | | | | | | \$ - | \$ - |
| | | | | | Hrs | | | | | | | | | | | | | | | | | | | | | | | | \$ - | \$ - |
| | | | | | Hrs | | | | | | | | | | | | | | | | | | | | | | | | \$ - | \$ - |
| | | | | | Hrs | | | | | | | | | | | | | | | | | | | | | | | | \$ - | \$ - |
| | | | | | Hrs | | | | | | | | | | | | | | | | | | | | | | | | \$ - | \$ - |
| | | | | | Hrs | | | | | | | | | | | | | | | | | | | | | | | | \$ - | \$ - |
| | | | | | Hrs | | | | | | | | | | | | | | | | | | | | | | | | \$ - | \$ - |
| | | | | | Hrs | | | | | | | | | | | | | | | | | | | | | | | | \$ - | \$ - |
| | | | | | Hrs | | | | | | | | | | | | | | | | | | | | | | | | \$ - | \$ - |
| | | | | | Hrs | | | | | | | | | | | | | | | | | | | | | | | | \$ - | \$ - |
| | | | | | Hrs | | | | | | | | | | | | | | | | | | | | | | | | \$ - | \$ - |
| | | | | | Hrs | | | | | | | | | | | | | | | | | | | | | | | | \$ - | \$ - |
| | | | | | Hrs | | | | | | | | | | | | | | | | | | | | | | | | \$ - | \$ - |
| | | | | | Hrs | | | | | | | | | | | | | | | | | | | | | | | | \$ - | \$ - |
| | | | | | Hrs | | | | | | | | | | | | | | | | | | | | | | | | \$ - | \$ - |
| | | | | | Hrs | | | | | | | | | | | | | | | | | | | | | | | | \$ - | \$ - |
| | | | | | Hrs | | | | | | | | | | | | | | | | | | | | | | | | \$ - | \$ - |
| | | | | | Hrs | | | | | | | | | | | | | | | | | | | | | | | | \$ - | \$ - |
| | | | | | Hrs | | | | | | | | | | | | | | | | | | | | | | | | \$ - | \$ - |
| | | | | | Hrs | | | | | | | | | | | | | | | | | | | | | | | | \$ - | \$ - |
| | | | | | Hrs | | | | | | | | | | | | | | | | | | | | | | | | \$ - | \$ - |
| | | | | | Hrs | | | | | | | | | | | | | | | | | | | | | | | | \$ - | \$ - |
| | | | | | Hrs | | | | | | | | | | | | | | | | | | | | | | | | \$ - | \$ - |
| | | | | | Hrs | | | | | | | | | | | | | | | | | | | | | | | | \$ - | \$ - |
| | | | | | Hrs | | | | | | | | | | | | | | | | | | | | | | | | \$ - | \$ - |
| | | | | | Hrs | | | | | | | | | | | | | | | | | | | | | | | | \$ - | \$ - |
| | | | | | Hrs | | | | | | | | | | | | | | | | | | | | | | | | \$ - | \$ - |
| | | | | | Hrs | | | | | | | | | | | | | | | | | | | | | | | | \$ - | \$ - |
| | | | | | Hrs | | | | | | | | | | | | | | | | | | | | | | | | \$ - | \$ - |
| | | | | | Hrs | | | | | | | | | | | | | | | | | | | | | | | | \$ - | \$ - |
| | | | | | Hrs | | | | | | | | | | | | | | | | | | | | | | | | \$ - | \$ - |
| | | | | | Hrs | | | | | | | | | | | | | | | | | | | | | | | | \$ - | \$ - |
| | | | | | Hrs | | | | | | | | | | | | | | | | | | | | | | | | \$ - | \$ - |
| | | | | | Hrs | | | | | | | | | | | | | | | | | | | | | | | | \$ - | \$ - |
| | | | | | Hrs</ | | | | | | | | | | | | | | | | | | | | | | | | | |

FORCE ACCOUNT EQUIPMENT RECORD

| | | | | | | | |
|-----------|-------------|----------|----------|------------|--|--|--|
| APPLICANT | PROJECT NO. | CATEGORY | FIPS NO. | DISASTER # | | | |
| Mine | | C | | FEMA | | | |

| TYPE OF EQUIPMENT | | | | DATES/HOURS USED EACH DAY | | | | | | | | | | | | | | | | | | | | | | | | TOTAL HRS | EQUIP RATE | TOTAL COST |
|--|-----|----------|---------------|---------------------------|-----|------|------|------|------|------|------|------|------|------|------|------|------|------|-----|-----|------|------|------|------|-----|-----|--|-----------|------------|--------------|
| Indicate size, capacity, horsepower, make, model, etc. | HP | CAPACITY | EQUIP. CODE # | OPERATOR'S NAME | | 4/18 | 4/19 | 4/20 | 4/21 | 4/22 | 4/23 | 4/24 | 4/25 | 4/26 | 4/27 | 4/28 | 4/29 | 4/30 | 5/1 | 5/2 | 5/3 | 5/4 | 5/5 | 5/6 | 5/7 | 5/8 | | | | |
| Truck, Pickup (50) | 250 | 3/4 ton | 8801 | Harvey, David | Hrs | | 1.5 | | | | | | 1.5 | | | | | | | | 1.5 | | | | | | | 4.50 | \$ 14.00 | \$ 63.00 |
| Truck, Pickup (51) | 250 | | 8801 | Self, James | Hrs | | 1.5 | | | | | | 1.5 | | | | | | | | 1.5 | | | | | | | 4.50 | \$ 14.00 | \$ 63.00 |
| Truck, Pickup (1) | | | 8801 | Gohlke, Henry | Hrs | | 1.5 | | | | | | 1.5 | | | | | | | | 1.5 | | | | | | | 4.50 | \$ 14.00 | \$ 63.00 |
| | | | | | Hrs | | | | | | | | | | | | | | | | | | | | | | | \$ - | \$ - | |
| | | | | | Hrs | | | | | | | | | | | | | | | | | | | | | | | \$ - | \$ - | |
| Truck, Pickup, (23)2 | 250 | 3/4 Ton | 8801 | Adams, Eric | Hrs | | 1.5 | 1.5 | 1.5 | | | | 1.5 | 1.5 | 1.5 | 1.5 | | | | | 1.5 | 1.5 | 1.5 | 1.5 | | | | 16.50 | \$ 14.00 | \$ 231.00 |
| Truck, Pickup, (12) | | 1/2 Ton | 8801 | Ramsey | Hrs | | 1.5 | 1.5 | 1.5 | 1.5 | | | 1.5 | 1.5 | 1.5 | | | | | | 1.5 | 1.5 | 1.5 | 1.5 | | | | 16.50 | \$ 14.00 | \$ 231.00 |
| Truck, Service (28) | | | 8801 | Tangway | Hrs | | | | | | | | | | | | | | | | | | | | | | | \$ 14.00 | \$ - | |
| Truck, Dump (24) | | 24 Yard | 8724 | jones Johnny | Hrs | | | 10.0 | 10.0 | 10.0 | | | 3.0 | 10.0 | 10.0 | 4.0 | | | | | 10.0 | 10.0 | 10.0 | 10.0 | | | | 97.00 | \$ 105.00 | \$ 10,185.00 |
| Truck, Pickup, (22) | 300 | 3/4 Ton | 8801 | David Williams | Hrs | | | | | | | | | | | | | | | | | | | | | | | \$ 14.00 | \$ - | |
| Crusher* | | | 8479 | | Hrs | | 7.0 | 7.0 | 7.0 | | | | 7.0 | 7.0 | 7.0 | 7.0 | | | | | 7.0 | 7.0 | 7.0 | 7.0 | | | | 77.00 | \$ 36.00 | \$ 2,772.00 |
| Shaker * | | | 8250 | | Hrs | | 7.0 | 7.0 | 7.0 | | | | 7.0 | 7.0 | 7.0 | 7.0 | | | | | 7.0 | 7.0 | 7.0 | 7.0 | | | | 77.00 | \$ 31.00 | \$ 2,387.00 |
| Dozer* | | | 8251 | | Hrs | | 3.0 | 3.0 | 3.0 | | | | 3.0 | 3.0 | 3.0 | 3.0 | | | | | 3.0 | 3.0 | 3.0 | 3.0 | | | | 33.00 | \$ 40.00 | \$ 1,320.00 |
| Loader | | | 8392 | | Hrs | | 3.0 | 3.0 | 3.0 | | | | 3.0 | 3.0 | 3.0 | 3.0 | | | | | 3.0 | 3.0 | 3.0 | 3.0 | | | | 33.00 | \$ 28.75 | \$ 948.75 |
| | | | | | Hrs | | | | | | | | | | | | | | | | | | | | | | | \$ - | \$ - | |
| | | | | | Hrs | | | | | | | | | | | | | | | | | | | | | | | \$ - | \$ - | |
| | | | | | Hrs | | | | | | | | | | | | | | | | | | | | | | | \$ - | \$ - | |
| | | | | | Hrs | | | | | | | | | | | | | | | | | | | | | | | \$ - | \$ - | |
| | | | | | Hrs | | | | | | | | | | | | | | | | | | | | | | | \$ - | \$ - | |
| | | | | | Hrs | | | | | | | | | | | | | | | | | | | | | | | \$ - | \$ - | |
| | | | | | Hrs | | | | | | | | | | | | | | | | | | | | | | | \$ - | \$ - | |
| | | | | | Hrs | | | | | | | | | | | | | | | | | | | | | | | \$ - | \$ - | |
| | | | | | Hrs | | | | | | | | | | | | | | | | | | | | | | | \$ - | \$ - | |
| | | | | | Hrs | | | | | | | | | | | | | | | | | | | | | | | \$ - | \$ - | |
| | | | | | Hrs | | | | | | | | | | | | | | | | | | | | | | | \$ - | \$ - | |
| | | | | | Hrs | | | | | | | | | | | | | | | | | | | | | | | \$ - | \$ - | |
| | | | | | Hrs | | | | | | | | | | | | | | | | | | | | | | | \$ - | \$ - | |
| | | | | | Hrs | | | | | | | | | | | | | | | | | | | | | | | \$ - | \$ - | |
| | | | | | Hrs | | | | | | | | | | | | | | | | | | | | | | | \$ - | \$ - | |
| | | | | | Hrs | | | | | | | | | | | | | | | | | | | | | | | \$ - | \$ - | |
| | | | | | Hrs | | | | | | | | | | | | | | | | | | | | | | | \$ - | \$ - | |
| | | | | | Hrs | | | | | | | | | | | | | | | | | | | | | | | \$ - | \$ - | |
| | | | | | Hrs | | | | | | | | | | | | | | | | | | | | | | | \$ - | \$ - | |
| | | | | | Hrs | | | | | | | | | | | | | | | | | | | | | | | \$ - | \$ - | |
| | | | | | Hrs | | | | | | | | | | | | | | | | | | | | | | | \$ - | \$ - | |
| | | | | | Hrs | | | | | | | | | | | | | | | | | | | | | | | \$ - | \$ - | |
| | | | | | Hrs | | | | | | | | | | | | | | | | | | | | | | | \$ - | \$ - | |
| | | | | | Hrs | | | | | | | | | | | | | | | | | | | | | | | \$ - | \$ - | |
| | | | | | Hrs | | | | | | | | | | | | | | | | | | | | | | | \$ - | \$ - | |
| | | | | | Hrs | | | | | | | | | | | | | | | | | | | | | | | \$ - | \$ - | |
| | | | | | Hrs | | | | | | | | | | | | | | | | | | | | | | | \$ - | \$ - | |
| | | | | | Hrs | | | | | | | | | | | | | | | | | | | | | | | \$ - | \$ - | |
| | | | | | Hrs | | | | | | | | | | | | | | | | | | | | | | | \$ - | \$ - | |
| | | | | | Hrs | | | | | | | | | | | | | | | | | | | | | | | \$ - | \$ - | |
| | | | | | Hrs | | | | | | | | | | | | | | | | | | | | | | | \$ - | \$ - | |
| | | | | | Hrs | | | | | | | | | | | | | | | | | | | | | | | \$ - | \$ - | |
| | | | | | Hrs | | | | | | | | | | | | | | | | | | | | | | | \$ - | \$ - | |
| | | | | | Hrs | | | | | | | | | | | | | | | | | | | | | | | \$ - | \$ - | |
| | | | | | Hrs | | | | | | | | | | | | | | | | | | | | | | | \$ - | \$ - | |
| | | | | | Hrs | | | | | | | | | | | | | | | | | | | | | | | \$ - | \$ - | |
| | | | | | Hrs | | | | | | | | | | | | | | | | | | | | | | | \$ - | \$ - | |
| | | | | | Hrs | | | | | | | | | | | | | | | | | | | | | | | \$ - | \$ - | |
| | | | | | Hrs | | | | | | | | | | | | | | | | | | | | | | | \$ - | \$ - | |
| | | | | | Hrs | | | | | | | | | | | | | | | | | | | | | | | \$ - | \$ - | |
| | | | | | Hrs | | | | | | | | | | | | | | | | | | | | | | | \$ - | \$ - | |
| | | | | | Hrs | | | | | | | | | | | | | | | | | | | | | | | \$ - | \$ - | |
| | | | | | Hrs | | | | | | | | | | | | | | | | | | | | | | | \$ - | \$ - | |
| | | | | | Hrs | | | | | | | | | | | | | | | | | | | | | | | \$ - | \$ - | |
| | | | | | Hrs | | | | | | | | | | | | | | | | | | | | | | | \$ - | \$ - | |
| | | | | | Hrs | | | | | | | | | | | | | | | | | | | | | | | \$ - | \$ - | |
| | | | | | Hrs | | | | | | | | | | | | | | | | | | | | | | | \$ - | \$ - | |
| | | | | | Hrs | | | | | | | | | | | | | | | | | | | | | | | \$ - | \$ - | |
| | | | | | Hrs | | | | | | | | | | | | | | | | | | | | | | | \$ - | \$ - | |
| | | | | | Hrs | | | | | | | | | | | | | | | | | | | | | | | \$ - | \$ - | |
| | | | | | Hrs | | | | | | | | | | | | | | | | | | | | | | | \$ - | \$ - | |
| | | | | | Hrs | | | | | | | | | | | | | | | | | | | | | | | \$ - | \$ - | |
| | | | | | Hrs | | | | | | | | | | | | | | | | | | | | | | | \$ - | \$ - | |
| | | | | | Hrs | | | | | | | | | | | | | | | | | | | | | | | | | |

FORCE ACCOUNT EQUIPMENT RECORD

| | | | | | | |
|-----------|-------------|----------|----------|------------|--|--|
| APPLICANT | PROJECT NO. | CATEGORY | FIPS NO. | DISASTER # | | |
| Mine | | C | | FEMA | | |

| TYPE OF EQUIPMENT | | | | DATES/HOURS USED EACH DAY | | | | | | | | | | | | | | | | | | | | | | | | TOTAL HRS | EQUIP RATE | TOTAL COST | |
|--|-----|----------|---------------|---------------------------|-----|-----|------|------|------|------|------|------|------|------|------|------|------|------|------|------|------|------|------|------|------|------|--|-----------|------------|------------|--------------|
| Indicate size, capacity, horsepower, make, model, etc. | HP | CAPACITY | EQUIP. CODE # | OPERATOR'S NAME | | 5/9 | 5/10 | 5/11 | 5/12 | 5/13 | 5/14 | 5/15 | 5/16 | 5/17 | 5/18 | 5/19 | 5/20 | 5/21 | 5/22 | 5/23 | 5/24 | 5/25 | 5/26 | 5/27 | 5/28 | 5/29 | | | | | |
| Truck, Pickup (50) | 250 | 3/4 ton | 8801 | Harvey, David | Hrs | | 1.5 | | | | | | | 1.5 | | | | | | | | 1.5 | | | | | | | 4.50 | \$ 14.00 | \$ 63.00 |
| Truck, Pickup (51) | 250 | | 8801 | Self, James | Hrs | | 1.5 | | | | | | | 1.5 | | | | | | | | 1.5 | | | | | | | 4.50 | \$ 14.00 | \$ 63.00 |
| Truck, Pickup (1) | | | 8801 | Gohlke, Henry | Hrs | | 1.5 | | | | | | | 1.5 | | | | | | | | 1.5 | | | | | | | 4.50 | \$ 14.00 | \$ 63.00 |
| | | | | | Hrs | | | | | | | | | | | | | | | | | | | | | | | | \$ - | \$ - | |
| | | | | | Hrs | | | | | | | | | | | | | | | | | | | | | | | | \$ - | \$ - | |
| Truck, Pickup, (23)2 | 250 | 3/4 Ton | 8801 | Adams, Eric | Hrs | | | 1.5 | 1.5 | 1.5 | | | | 1.5 | 1.5 | 1.5 | 1.5 | | | | | 1.5 | 1.5 | 1.5 | 1.5 | | | | 16.50 | \$ 14.00 | \$ 231.00 |
| Truck, Pickup, (12) | | 1/2 Ton | 8801 | Ramsey | Hrs | | 1.5 | 1.5 | 1.5 | 1.5 | | | | 1.5 | 1.5 | | 1.5 | | | | | 1.5 | | 1.5 | | | | | 13.50 | \$ 14.00 | \$ 189.00 |
| Truck, Service (28) | | | 8801 | Tangway | Hrs | | 1.5 | | | | | | | 1.5 | | | | | | | | | | | | | | | 3.00 | \$ 14.00 | \$ 42.00 |
| Truck, Dump (24) | | 24 Yard | 8724 | jones Johnny | Hrs | | 10.0 | 10.0 | 10.0 | 10.0 | | | | | 10.0 | 10.0 | 10.0 | | | | | 10.0 | 10.0 | 10.0 | | | | | 100.00 | \$ 105.00 | \$ 10,500.00 |
| Truck, Pickup, (22) | 300 | 3/4 Ton | 8801 | David Williams | Hrs | | | | | | | | | | | | | | | | | | | | | | | | \$ 14.00 | \$ - | |
| Crusher* | | | 8479 | | Hrs | | | 7.0 | 7.0 | 7.0 | | | | 7.0 | 7.0 | 7.0 | 7.0 | | | | | 7.0 | 7.0 | 7.0 | 7.0 | | | | 77.00 | \$ 36.00 | \$ 2,772.00 |
| Shaker * | | | 8250 | | Hrs | | | 7.0 | 7.0 | 7.0 | | | | 7.0 | 7.0 | 7.0 | 7.0 | | | | | 7.0 | 7.0 | 7.0 | 7.0 | | | | 77.00 | \$ 31.00 | \$ 2,387.00 |
| Dozer* | | | 8251 | | Hrs | | | 3.0 | 3.0 | 3.0 | | | | 3.0 | 3.0 | 3.0 | 3.0 | | | | | 3.0 | 3.0 | 3.0 | 3.0 | | | | 33.00 | \$ 40.00 | \$ 1,320.00 |
| Loader | | | 8392 | | Hrs | | | 3.0 | 3.0 | 3.0 | | | | 3.0 | 3.0 | 3.0 | 3.0 | | | | | 3.0 | 3.0 | 3.0 | 3.0 | | | | 33.00 | \$ 28.75 | \$ 948.75 |
| | | | | | Hrs | | | | | | | | | | | | | | | | | | | | | | | | \$ - | \$ - | |
| | | | | | Hrs | | | | | | | | | | | | | | | | | | | | | | | | \$ - | \$ - | |
| | | | | | Hrs | | | | | | | | | | | | | | | | | | | | | | | | \$ - | \$ - | |
| | | | | | Hrs | | | | | | | | | | | | | | | | | | | | | | | | \$ - | \$ - | |
| | | | | | Hrs | | | | | | | | | | | | | | | | | | | | | | | | \$ - | \$ - | |
| | | | | | Hrs | | | | | | | | | | | | | | | | | | | | | | | | \$ - | \$ - | |
| | | | | | Hrs | | | | | | | | | | | | | | | | | | | | | | | | \$ - | \$ - | |
| | | | | | Hrs | | | | | | | | | | | | | | | | | | | | | | | | \$ - | \$ - | |
| | | | | | Hrs | | | | | | | | | | | | | | | | | | | | | | | | \$ - | \$ - | |
| | | | | | Hrs | | | | | | | | | | | | | | | | | | | | | | | | \$ - | \$ - | |
| | | | | | Hrs | | | | | | | | | | | | | | | | | | | | | | | | \$ - | \$ - | |
| | | | | | Hrs | | | | | | | | | | | | | | | | | | | | | | | | \$ - | \$ - | |
| | | | | | Hrs | | | | | | | | | | | | | | | | | | | | | | | | \$ - | \$ - | |
| | | | | | Hrs | | | | | | | | | | | | | | | | | | | | | | | | \$ - | \$ - | |
| | | | | | Hrs | | | | | | | | | | | | | | | | | | | | | | | | \$ - | \$ - | |
| | | | | | Hrs | | | | | | | | | | | | | | | | | | | | | | | | \$ - | \$ - | |
| | | | | | Hrs | | | | | | | | | | | | | | | | | | | | | | | | \$ - | \$ - | |
| | | | | | Hrs | | | | | | | | | | | | | | | | | | | | | | | | \$ - | \$ - | |
| | | | | | Hrs | | | | | | | | | | | | | | | | | | | | | | | | \$ - | \$ - | |
| | | | | | Hrs | | | | | | | | | | | | | | | | | | | | | | | | \$ - | \$ - | |
| | | | | | Hrs | | | | | | | | | | | | | | | | | | | | | | | | \$ - | \$ - | |
| | | | | | Hrs | | | | | | | | | | | | | | | | | | | | | | | | \$ - | \$ - | |
| | | | | | Hrs | | | | | | | | | | | | | | | | | | | | | | | | \$ - | \$ - | |
| | | | | | Hrs | | | | | | | | | | | | | | | | | | | | | | | | \$ - | \$ - | |
| | | | | | Hrs | | | | | | | | | | | | | | | | | | | | | | | | \$ - | \$ - | |
| | | | | | Hrs | | | | | | | | | | | | | | | | | | | | | | | | \$ - | \$ - | |
| | | | | | Hrs | | | | | | | | | | | | | | | | | | | | | | | | \$ - | \$ - | |
| | | | | | Hrs | | | | | | | | | | | | | | | | | | | | | | | | \$ - | \$ - | |
| | | | | | Hrs | | | | | | | | | | | | | | | | | | | | | | | | \$ - | \$ - | |
| | | | | | Hrs | | | | | | | | | | | | | | | | | | | | | | | | \$ - | \$ - | |
| | | | | | Hrs | | | | | | | | | | | | | | | | | | | | | | | | \$ - | \$ - | |
| | | | | | Hrs | | | | | | | | | | | | | | | | | | | | | | | | \$ - | \$ - | |
| | | | | | Hrs | | | | | | | | | | | | | | | | | | | | | | | | \$ - | \$ - | |
| | | | | | Hrs | | | | | | | | | | | | | | | | | | | | | | | | \$ - | \$ - | |
| | | | | | Hrs | | | | | | | | | | | | | | | | | | | | | | | | \$ - | \$ - | |
| | | | | | Hrs | | | | | | | | | | | | | | | | | | | | | | | | \$ - | \$ - | |
| | | | | | Hrs | | | | | | | | | | | | | | | | | | | | | | | | \$ - | \$ - | |
| | | | | | Hrs | | | | | | | | | | | | | | | | | | | | | | | | \$ - | \$ - | |
| | | | | | Hrs | | | | | | | | | | | | | | | | | | | | | | | | \$ - | \$ - | |
| | | | | | Hrs | | | | | | | | | | | | | | | | | | | | | | | | \$ - | \$ - | |
| | | | | | Hrs | | | | | | | | | | | | | | | | | | | | | | | | \$ - | \$ - | |
| | | | | | Hrs | | | | | | | | | | | | | | | | | | | | | | | | \$ - | \$ - | |
| | | | | | Hrs | | | | | | | | | | | | | | | | | | | | | | | | \$ - | \$ - | |
| | | | | | Hrs | | | | | | | | | | | | | | | | | | | | | | | | \$ - | \$ - | |
| | | | | | Hrs | | | | | | | | | | | | | | | | | | | | | | | | \$ - | \$ - | |
| | | | | | Hrs | | | | | | | | | | | | | | | | | | | | | | | | \$ - | \$ - | |
| | | | | | Hrs | | | | | | | | | | | | | | | | | | | | | | | | \$ - | \$ - | |
| | | | | | Hrs | | | | | | | | | | | | | | | | | | | | | | | | \$ - | \$ - | |
| | | | | | Hrs | | | | | | | | | | | | | | | | | | | | | | | | \$ - | \$ - | |
| | | | | | Hrs | | | | | | | | | | | | | | | | | | | | | | | | \$ - | \$ - | |
| | | | | | Hrs | | | | | | | | | | | | | | | | | | | | | | | | \$ - | \$ - | |
| | | | | | | | | | | | | | | | | | | | | | | | | | | | | | | | |

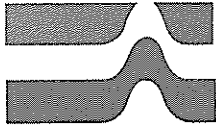
FORCE ACCOUNT EQUIPMENT RECORD

| | | | | | | | |
|-----------|-------------|----------|----------|------------|--|--|--|
| APPLICANT | PROJECT NO. | CATEGORY | FIPS NO. | DISASTER # | | | |
| Mine | | C | | FEMA | | | |

| TYPE OF EQUIPMENT | | | | DATES/HOURS USED EACH DAY | | | | | | | | | | | | | | | | | TOTAL HRS | EQUIP RATE | TOTAL COST | | | | | | | |
|--|-----|----------|---------------|---------------------------|-----|------|------|------|------|------|------|------|-------|-------|-------|-------|-------|-------|-------|-------|-----------|------------|------------|-------|-------|-------|-------|-----------|-------------|----------|
| Indicate size, capacity, horsepower, make, model, etc. | HP | CAPACITY | EQUIP. CODE # | OPERATOR'S NAME | | 10/3 | 10/4 | 10/5 | 10/6 | 10/7 | 10/8 | 10/9 | 10/10 | 10/11 | 10/12 | 10/13 | 10/14 | 10/15 | 10/16 | 10/17 | 10/18 | 10/19 | 10/20 | 10/21 | 10/22 | 10/23 | | | | |
| Truck, Pickup (50) | 250 | 3/4 ton | 8801 | Harvey, David | Hrs | | 1.5 | | | | | | 1.5 | | | | | | | | 1.5 | | | | | | | 4.50 | \$ 14.00 | \$ 63.00 |
| Truck, Pickup (51) | 250 | | 8801 | Self, James | Hrs | | 1.5 | | | | | | 1.5 | | | | | | | | 1.5 | | | | | | | 4.50 | \$ 14.00 | \$ 63.00 |
| Truck, Pickup (1) | | | 8801 | Gohlke, Henry | Hrs | | 1.5 | | | | | | 1.5 | | | | | | | | 1.5 | | | | | | | 4.50 | \$ 14.00 | \$ 63.00 |
| | | | | | Hrs | | | | | | | | | | | | | | | | | | | | | | | \$ - | \$ - | |
| | | | | | Hrs | | | | | | | | | | | | | | | | | | | | | | | \$ - | \$ - | |
| Truck, Pickup, (23)2 | 250 | 3/4 Ton | 8801 | Adams, Eric | Hrs | | 1.5 | 1.5 | 1.5 | 1.5 | | | 1.5 | 1.5 | 1.5 | 1.5 | | | | | 1.5 | 1.5 | 1.5 | 1.5 | | | 18.00 | \$ 14.00 | \$ 252.00 | |
| Truck, Pickup, (12) | | 1/2 Ton | 8801 | Ramsey | Hrs | | 1.5 | 1.5 | 1.5 | 1.5 | | | 1.5 | | | 1.5 | | | | | | 1.5 | 1.5 | | | | 12.00 | \$ 14.00 | \$ 168.00 | |
| Truck, Service (28) | | | 8801 | Tangway | Hrs | | 1.5 | | | | | | 1.5 | | | | | | | | 1.5 | | | | | | 4.50 | \$ 14.00 | \$ 63.00 | |
| Truck, Dump (24) | | 24 Yard | 8724 | jones Johnny | Hrs | | | 10.0 | 10.0 | 10.0 | | | | 10.0 | 10.0 | | | | | | | 10.0 | 10.0 | 10.0 | 10.0 | | 90.00 | \$ 105.00 | \$ 9,450.00 | |
| Truck, Pickup, (22) | 300 | 3/4 Ton | 8801 | David Williams | Hrs | | | | | | | | | | | | | | | | | | | | | | | \$ 14.00 | \$ - | |
| Crusher* | | | 8479 | | Hrs | | 7.0 | 7.0 | 7.0 | 7.0 | | | 7.0 | 7.0 | 7.0 | 7.0 | | | | | 7.0 | 7.0 | 7.0 | 7.0 | | | 84.00 | \$ 36.00 | \$ 3,024.00 | |
| Shaker * | | | 8250 | | Hrs | | 7.0 | 7.0 | 7.0 | 7.0 | | | 7.0 | 7.0 | 7.0 | 7.0 | | | | | 7.0 | 7.0 | 7.0 | 7.0 | | | 84.00 | \$ 31.00 | \$ 2,604.00 | |
| Dozer* | | | 8251 | | Hrs | | 3.0 | 3.0 | 3.0 | 3.0 | | | 3.0 | 3.0 | 3.0 | 3.0 | | | | | 3.0 | 3.0 | 3.0 | 3.0 | | | 36.00 | \$ 40.00 | \$ 1,440.00 | |
| Loader | | | 8392 | | Hrs | | 3.0 | 3.0 | 3.0 | 3.0 | | | 3.0 | 3.0 | 3.0 | 3.0 | | | | | 3.0 | 3.0 | 3.0 | 3.0 | | | 36.00 | \$ 28.75 | \$ 1,035.00 | |
| | | | | | Hrs | | | | | | | | | | | | | | | | | | | | | | | \$ - | \$ - | |
| | | | | | Hrs | | | | | | | | | | | | | | | | | | | | | | | \$ - | \$ - | |
| | | | | | Hrs | | | | | | | | | | | | | | | | | | | | | | | \$ - | \$ - | |
| | | | | | Hrs | | | | | | | | | | | | | | | | | | | | | | | \$ - | \$ - | |
| | | | | | Hrs | | | | | | | | | | | | | | | | | | | | | | | \$ - | \$ - | |
| | | | | | Hrs | | | | | | | | | | | | | | | | | | | | | | | \$ - | \$ - | |
| | | | | | Hrs | | | | | | | | | | | | | | | | | | | | | | | \$ - | \$ - | |
| | | | | | Hrs | | | | | | | | | | | | | | | | | | | | | | | \$ - | \$ - | |
| | | | | | Hrs | | | | | | | | | | | | | | | | | | | | | | | \$ - | \$ - | |
| | | | | | Hrs | | | | | | | | | | | | | | | | | | | | | | | \$ - | \$ - | |
| | | | | | Hrs | | | | | | | | | | | | | | | | | | | | | | | \$ - | \$ - | |
| | | | | | Hrs | | | | | | | | | | | | | | | | | | | | | | | \$ - | \$ - | |
| | | | | | Hrs | | | | | | | | | | | | | | | | | | | | | | | \$ - | \$ - | |
| | | | | | Hrs | | | | | | | | | | | | | | | | | | | | | | | \$ - | \$ - | |
| | | | | | Hrs | | | | | | | | | | | | | | | | | | | | | | | \$ - | \$ - | |
| | | | | | Hrs | | | | | | | | | | | | | | | | | | | | | | | \$ - | \$ - | |
| | | | | | Hrs | | | | | | | | | | | | | | | | | | | | | | | \$ - | \$ - | |
| | | | | | Hrs | | | | | | | | | | | | | | | | | | | | | | | \$ - | \$ - | |
| | | | | | Hrs | | | | | | | | | | | | | | | | | | | | | | | \$ - | \$ - | |
| | | | | | Hrs | | | | | | | | | | | | | | | | | | | | | | | \$ - | \$ - | |
| | | | | | Hrs | | | | | | | | | | | | | | | | | | | | | | | \$ - | \$ - | |
| | | | | | Hrs | | | | | | | | | | | | | | | | | | | | | | | \$ - | \$ - | |
| | | | | | Hrs | | | | | | | | | | | | | | | | | | | | | | | \$ - | \$ - | |
| | | | | | Hrs | | | | | | | | | | | | | | | | | | | | | | | \$ - | \$ - | |
| | | | | | Hrs | | | | | | | | | | | | | | | | | | | | | | | \$ - | \$ - | |
| | | | | | Hrs | | | | | | | | | | | | | | | | | | | | | | | \$ - | \$ - | |
| | | | | | Hrs | | | | | | | | | | | | | | | | | | | | | | | \$ - | \$ - | |
| | | | | | Hrs | | | | | | | | | | | | | | | | | | | | | | | \$ - | \$ - | |
| | | | | | Hrs | | | | | | | | | | | | | | | | | | | | | | | \$ - | \$ - | |
| | | | | | Hrs | | | | | | | | | | | | | | | | | | | | | | | \$ - | \$ - | |
| | | | | | Hrs | | | | | | | | | | | | | | | | | | | | | | | \$ - | \$ - | |
| | | | | | Hrs | | | | | | | | | | | | | | | | | | | | | | | \$ - | \$ - | |
| | | | | | Hrs | | | | | | | | | | | | | | | | | | | | | | | \$ - | \$ - | |
| | | | | | Hrs | | | | | | | | | | | | | | | | | | | | | | | \$ - | \$ - | |
| | | | | | Hrs | | | | | | | | | | | | | | | | | | | | | | | \$ - | \$ - | |
| | | | | | Hrs | | | | | | | | | | | | | | | | | | | | | | | \$ - | \$ - | |
| | | | | | Hrs | | | | | | | | | | | | | | | | | | | | | | | \$ - | \$ - | |
| | | | | | Hrs | | | | | | | | | | | | | | | | | | | | | | | \$ - | \$ - | |
| | | | | | Hrs | | | | | | | | | | | | | | | | | | | | | | | \$ - | \$ - | |
| | | | | | Hrs | | | | | | | | | | | | | | | | | | | | | | | \$ - | \$ - | |
| | | | | | Hrs | | | | | | | | | | | | | | | | | | | | | | | \$ - | \$ - | |
| | | | | | Hrs | | | | | | | | | | | | | | | | | | | | | | | \$ - | \$ - | |
| | | | | | Hrs | | | | | | | | | | | | | | | | | | | | | | | \$ - | \$ - | |
| | | | | | Hrs | | | | | | | | | | | | | | | | | | | | | | | \$ - | \$ - | |
| | | | | | Hrs | | | | | | | | | | | | | | | | | | | | | | | \$ - | \$ - | |
| | | | | | Hrs | | | | | | | | | | | | | | | | | | | | | | | \$ - | \$ - | |
| | | | | | Hrs | | | | | | | | | | | | | | | | | | | | | | | \$ - | \$ - | |
| | | | | | Hrs | | | | | | | | | | | | | | | | | | | | | | | \$ - | \$ - | |
| | | | | | Hrs | | | | | | | | | | | | | | | | | | | | | | | \$ - | \$ - | |
| | | | | | Hrs | | | | | | | | | | | | | | | | | | | | | | | \$ - | \$ - | |
| | | | | | Hrs | | | | | | | | | | | | | | | | | | | | | | | \$ - | \$ - | |
| | | | | | Hrs | | | | | | | | | | | | | | | | | | | | | | | \$ - | \$ - | |
| | | | | | Hrs | | | | | | | | | | | | | | | | | | | | | | | \$ - | \$ - | |
| | | | | | Hrs | | | | | | | | | | | | | | | | | | | | | | | | | |

Rental Costs

Geotechnical Report



Ardaman & Associates, Inc.

Geotechnical, Environmental and
Materials Consultants

January 5, 2011
File No. 113-10-40-1499

Preble-Rish, Inc.
36 Jasper Thomas Road
Crawfordville, Florida 32327

Attention: Mr. Alan Wise, P.E., Project Manager

Subject: Report of Laboratory Testing on Limestone sampled at Goose Pasture Road, Lamont,
Florida 32336

Gentlemen:

As requested, Ardaman & Associates, Inc. sampled the stockpile designated by Mr Wise and has performed the laboratory testing on the recovered limerock sample from the Jefferson County Rock Mine. This letter transmits the results of the laboratory tests.

The limestone sample was subjected to testing by Limerock Bearing Ratio and carbonates. The results of these tests are as follows:

| | |
|-------------------------------------|-----------|
| Maximum Density (Modified Proctor): | 117.4 pcf |
| Optimum Moisture Content: | 11.4 |
| Limerock Bearing Ratio (LBR): | 50 |

Carbonates (as Magnesium + Calcium) (FM5-514): 75%

Further documentation on the Moisture-Density Relationship test and Limerock Bearing Ratio Test are attached.

Section 911-6 *Limerock Bearing Ratio Requirements* (see FDOT Specification attached), states that a limerock base shall obtain an average LBR value of 100 or greater. The limerock tested had 82.5% passing the U.S. No. 4 sieve. Limestone meeting the noted LBR requirement commonly has 40 to 70% passing the U.S. No. 4 sieve. Based on observation of the limerock sample being relatively silty and the results of this sieve test, the sample appears to be relatively fine grained.

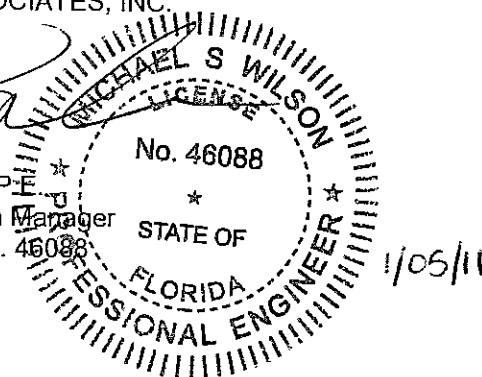
Additional testing to provide fines content and plasticity was not included in the scope of the project, but based on observation of the sample, we estimate that the sample was non-plastic with very little clay contents.

If you have any questions regarding these test results, or this letter, please do not hesitate to contact us.

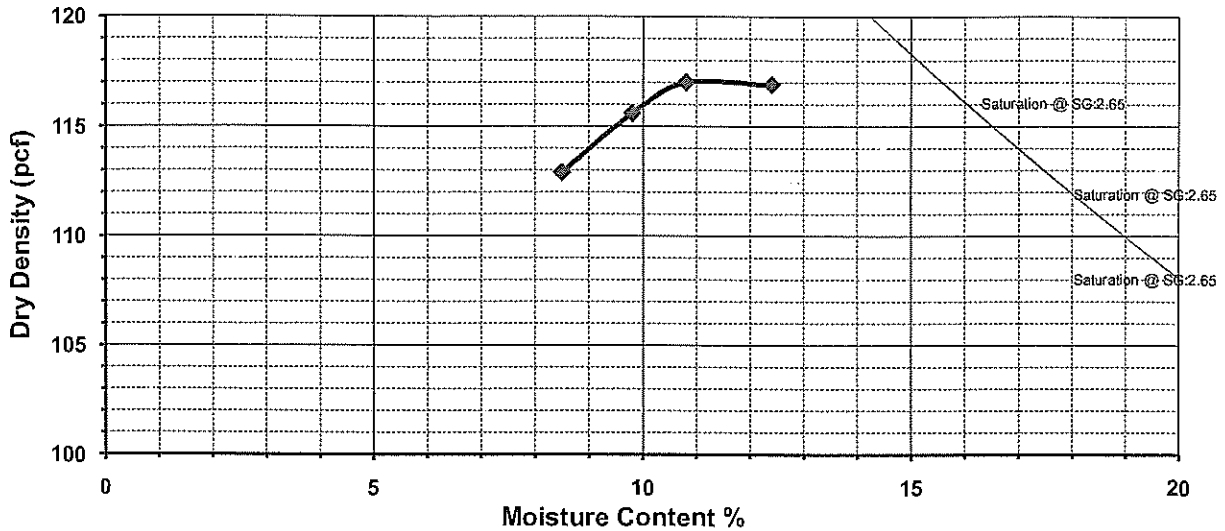
Very truly yours,
ARDAMAN & ASSOCIATES, INC.

Michael S. Wilson, P.E.
Tallahassee Branch Manager
Fl. Eng. License No. 46088

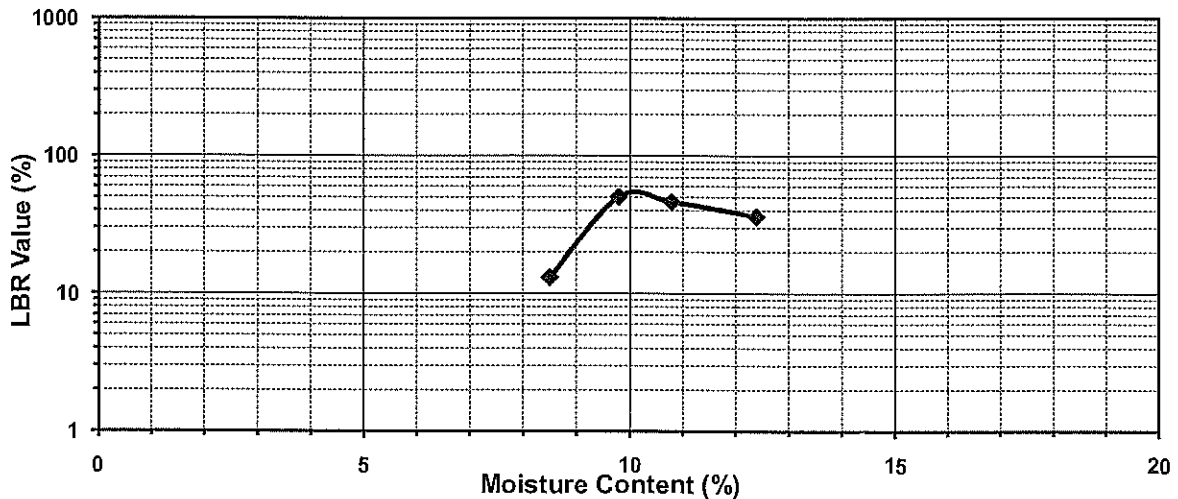
MSW/JMC/ms



Moisture -Density Relationship Test



Limerock Bearing Ratio Test



PROJECT INFORMATION

| | | | |
|---------------------|----------------------------|-----------------|------------|
| Project Name: | Jefferson County Rock Mine | Sampled By: | Joe Pace |
| Client Name: | Preble Rish | Date Sampled: | 12/14/2010 |
| File No.: | 10-40-1499 | Date Compacted: | 12/21/2010 |
| Sample Description: | Limerock | Date Tested: | 12/23/2010 |
| Intended Use: | Base | Mold Vol.: | 1/13.33 |
| Sample Location: | Stockpile at Mine | Test Method: | FM 5-515 |

TEST RESULTS

| | | |
|------------------------------------|------------------------|--|
| Maximum Dry Density (pcf): 117.4 | -200(%): Not Performed | Reviewed By: Michael S. Wilson, P.E. Branch Manager Fl. Eng. License No. #46088 |
| Optimum Moisture Content (%): 11.4 | LL: Not Performed | |
| LBR Value (%): 50 | PI: Not Performed | |
| Unified Classification: | Not Performed | |
| AASHTO Classification: | Not Performed | |

NOTE: This report does not address the suitability of the soils tested. Reference project specifications for compliance. Additional testing such as classification testing (i.e. soil fines passing #200 sieve, sieve analysis and Atterberg limits) may be required to validate compliance.

AS A MUTUAL PROTECTION TO CLIENTS, THE PUBLIC AND OURSELVES, ALL REPORTS ARE SUBMITTED AS THE CONFIDENTIAL PROPERTY OF CLIENTS AND AUTHORIZATION FOR PUBLICATION OF STATEMENTS, CONCLUSIONS, OR EXTRACTS FROM OR REGARDING OUR REPORTS IS RESERVED PENDING OUR WRITTEN APPROVAL.



A & S LABORATORIES INCORPORATED

2250 Success Drive, Odessa, Florida 33556 (727) 375-0388

TEST REPORT

Customer: Allied Engineering & Testing
A&S Sample No: 333766
Mine Number: N/A
Sample Location: Jefferson County Rock Mine
Sample Number: N/A
Date Sampled: 12/22/10
Date Tested: 1/5/10
Client: Messimer
Project Number: N/A
Lab Number: N/A
Proposed Use: N/A
Reference: N/A

The results of tests performed in accordance with FM5-514, Carbonates and Organic Matter in Limerock are as follows:

| <u>PARAMETER</u> | <u>UNITS</u> | <u>RESULTS</u> |
|--|--------------|----------------|
| Carbonates (as Magnesium + Calcium) | % | 74.89 |

Gregory P. Allen

Gregory P. Allen
Laboratory Director

**SECTION 911
LIMEROCK MATERIAL FOR
BASE AND STABILIZED BASE**

911-1 General.

This Section governs materials to be used on construction of limerock base and limerock stabilized base.

911-2 Furnishing of Material.

Except as might be specifically shown otherwise, all limerock material and the sources thereof shall be furnished by the Contractor. Approval of mineral aggregate sources shall be in accordance with 6-3.3. Any limerock material occurring in State-furnished borrow areas shall not be used by the Contractor in constructing the base, unless permitted by the plans or other Contract Documents.

911-3 Composition.

The minimum of carbonates of calcium and magnesium in the limerock material shall be 70%. The maximum percentage of water-sensitive clay mineral shall be 3. Determination shall be at the option of the Engineer.

911-4 Liquid Limit and Plasticity Requirements.

911-4.1 Material for Limerock Base: The liquid limit shall not exceed 35 and the material shall be non-plastic.

911-4.2 Material Used in Limerock Stabilized Base: The liquid limit shall not exceed 35 and the plastic index shall not exceed ten.

911-5 Mechanical Requirements.

911-5.1 Deleterious Material: Limerock material shall not contain cherty or other extremely hard pieces, or lumps, balls or pockets of sand or clay size material in sufficient quantity as to be detrimental to the proper bonding, finishing, or strength of the limerock base.

911-5.2 Gradation and Size Requirements:

911-5.2.1 For Limerock Base: At least 97% (by weight) of the material shall pass a 3 1/2 inch sieve and the material shall be graded uniformly down to dust. The fine material shall consist entirely of dust of fracture. All crushing or breaking-up which might be necessary in order to meet such size requirements shall be done before the material is placed on the road.

911-5.2.2 For Limerock Stabilized Base: For this use the limerock material shall meet the requirements of 911-5.2.1 except that 97% shall pass the 1 1/2 inch sieve.

911-6 Limerock Bearing Ratio Requirements.

Limerock material used in construction of limerock base shall have an average LBR value of not less than 100. The average LBR value of material produced at a particular source shall be determined in accordance with an approved quality control procedure.

Market Price of Limerock

The BIDDER agrees to perform all the work described in the CONTRACT DOCUMENTS for the following prices:

BID SCHEDULE

| Item | Description | Unit | Unit Price |
|------|--|------|------------|
| 1 | Alternative #1: F.O.B. Pick up from Mine | TON | 4.50 |
| 2 | Alternative #2: F.O.B. Delivery to Sites North of FL State Road 20 | TON | 15.50 |
| 3 | Alternative #3: F.O.B. Delivery to Sites South of FL State Road 20 | TON | 15.50 |

* NOTE:

Respectfully Submitted:

Shawn Snyder

Signature

Vice President

Title

MAY 4, 2009

Date

SEAL: (If Bid by Corporation)

A-Mining Group LLC

Company Name

19080 West US 98
LAMONT, FL 32330

Address

850-575-4473

Phone Number